

Power Amplifier

18-26.5GHz/35dB Gain/41dBm Psat

Model: TLPA18G26.5G-35-35

TLPA18G26.5G-35-35 is a power amplifier with a minimum power gain of 35 dB and a nominal Psat of 41 dBm across the frequency range of 18 to 26.5 GHz. The DC power requirement for the amplifier is +20 VDC. The input and output port configuration offers coax adapter structure with 2.92mm female.

Features:

- Frequency range: 18-26.5GHz
- Gain: 35dB Min
- Output Power Psat: 41dBm Typ
- Good Power and Gain Flatness
- 50 Ohm Matched Input / Output

Applications:

- Cellular
- PCN
- GSM
- ISM
- Lab Test

电气特性 Electrical Characteristics:

参数 Parameter	Min	Typ	Max	单位 Units
频率范围 Frequency range	18		26.5	GHz
功率增益 Power Gain	35			dB
增益平坦度 Gain Flatness		±2		dB
线性输出功率 Output P1dB	35			dBm
饱和输出功率 Output Psat	40	41		dBm
杂散 Spurious			-50	dBc
谐波抑制 Harmonic			-20	dBc
输入驻波 Input VSWR			2	:1
直流电压 DC Voltage	+18	+20	+22	V DC
功耗 Power consumption			70	W
阻抗 Impedance		50		Ohms

机械特性 Mechanical Specifications:

参数 Parameter	指标 Value	单位 Units
输入/输出接口 Input /Output Connector	2.92mm Female/2.92mm Female	
直流偏置 DC Bias	Solder Pin	
尺寸 Size	60*60*11(Without Heatsink) 188*125*146(With Heatsink)	mm
重量 Weight	200	g

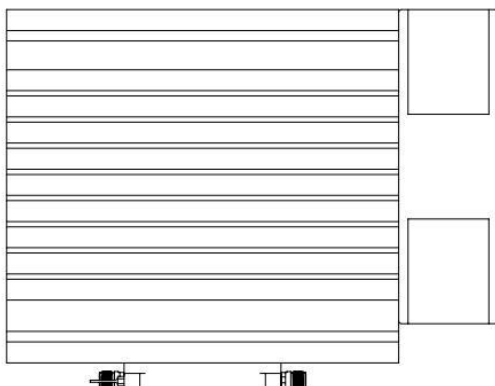
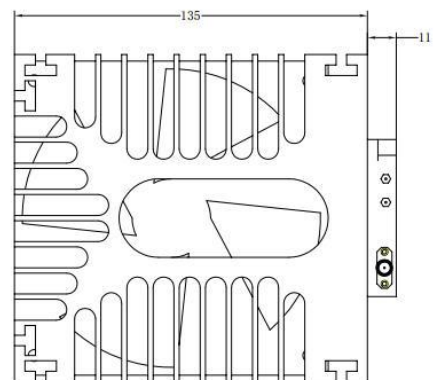
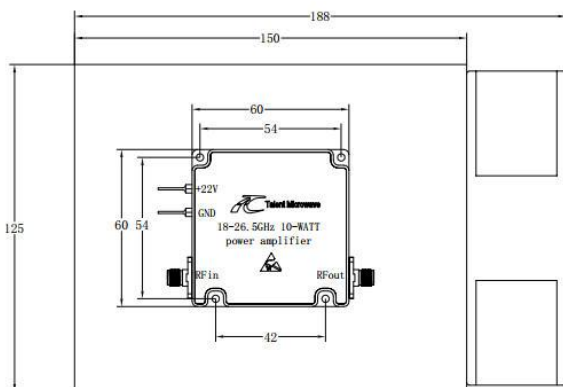
绝对最大值 Absolute Maximum Ratings:

参数 Parameter	指标 Value
供电偏置电压 Supply Bias Voltage	+22 V
输入功率 RF Input Power	+5 dBm
ESD灵敏度 ESD sensitivity (HBm)	Class 0, passed 150V



外形图 Outline Drawing:

Unit:mm



ESD Protection: Strictly adhere to ESD precautions to prevent electrostatic damage.

温度环境 Environmental Conditions:

参数 Parameter	Min	Typ	Max	单位 Units
操作温度 Operating Temperature*	-40		+60	°C
存储温度 Non-operating Temperature*	-50		+70	°C
相对湿度 Relative humidity		95		%
海拔 Altitude	10,000			feet
震动 Shock / Vibration(MIL-STD-810F)	25g rms (15 degree 2KHz) endurance, 1 hour per axis			
冲击 Shock(non operating)	20G for 11msc half sin wave,3 axis both directions			

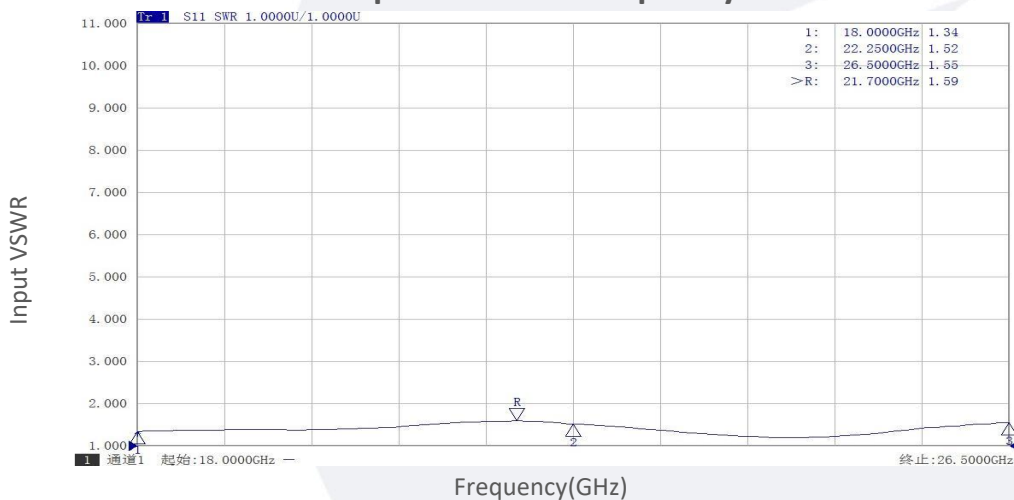
*Note: For a wider temperature range, please consult the manufacturer.

订货信息 Ordering Information:

标准型号 Base Number	描述 Description	版本号 Revision
TLPA18G26.5G-35-35	Power amplifier 18-26.5GHz, Gain:35dB,Psat:41dBm,+20V DC,With Heatsink	Rev.1.1

典型曲线 Typical Performance Data:

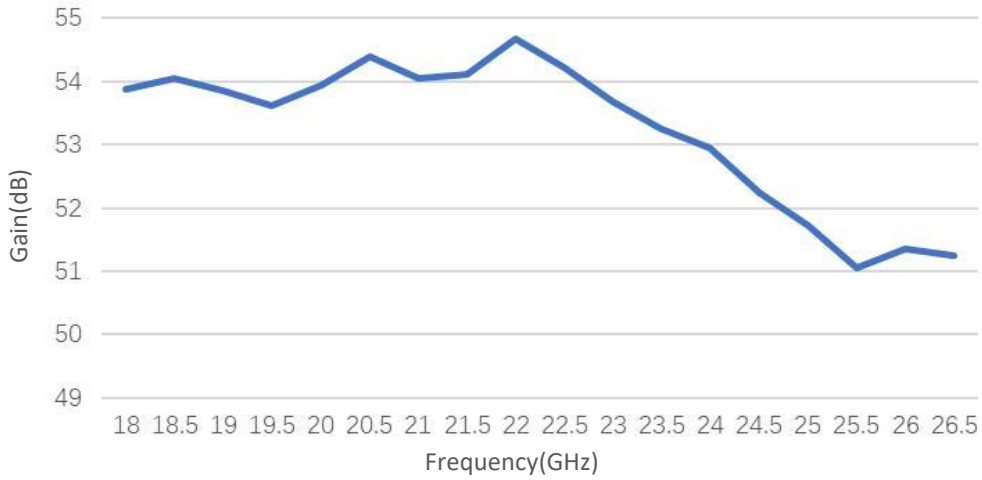
Input VSWR vs Frequency



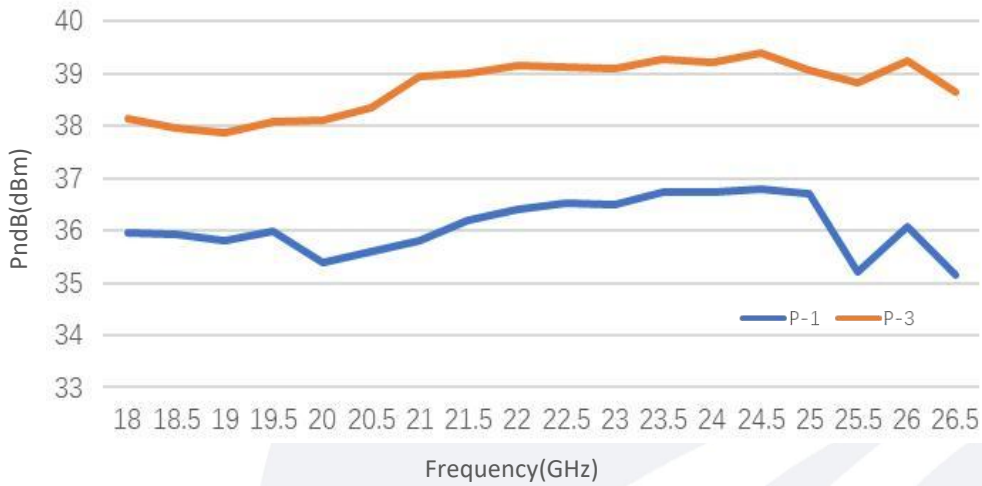
Note: Above data is for ref only, actual data may vary from unit to unit depending on operating environment and other factors like material lots etc.

典型曲线 Typical Performance Data:

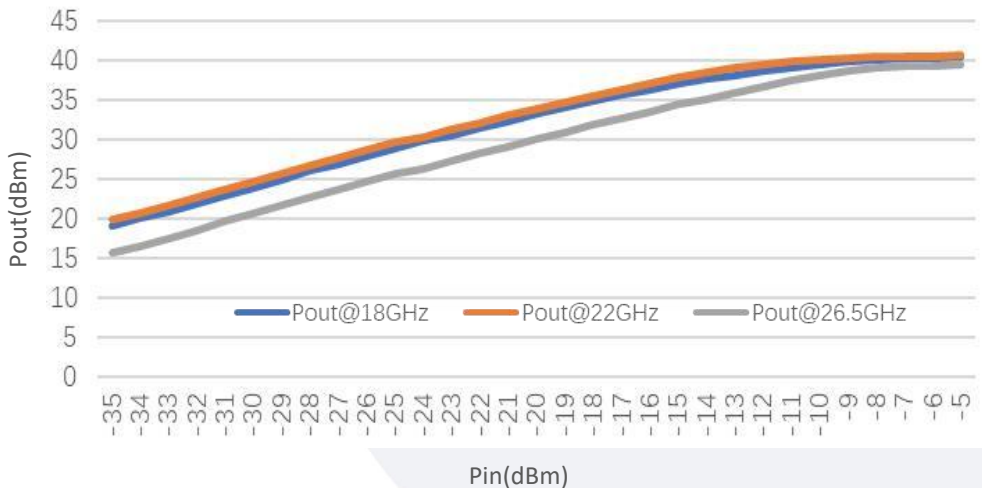
Small Signal Gain vs Frequency



PndB vs Frequency

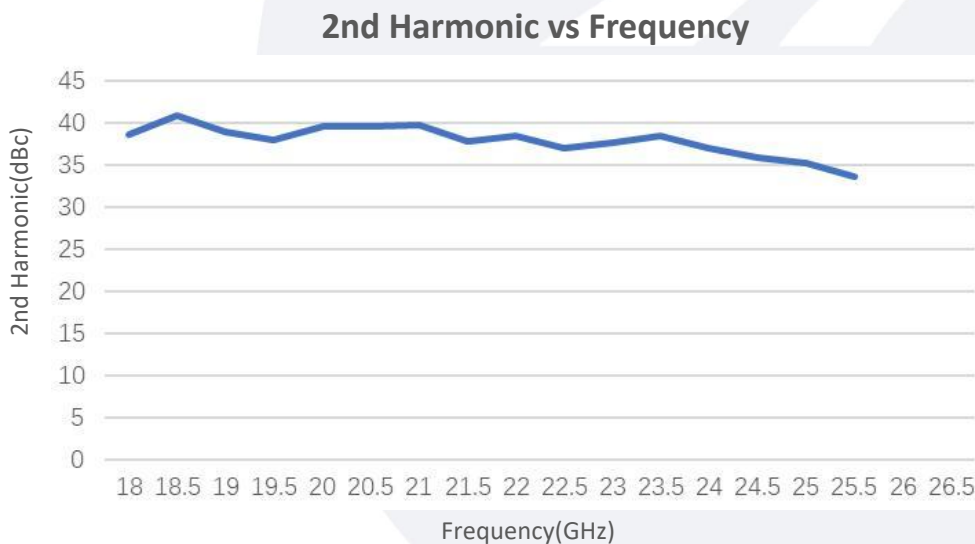
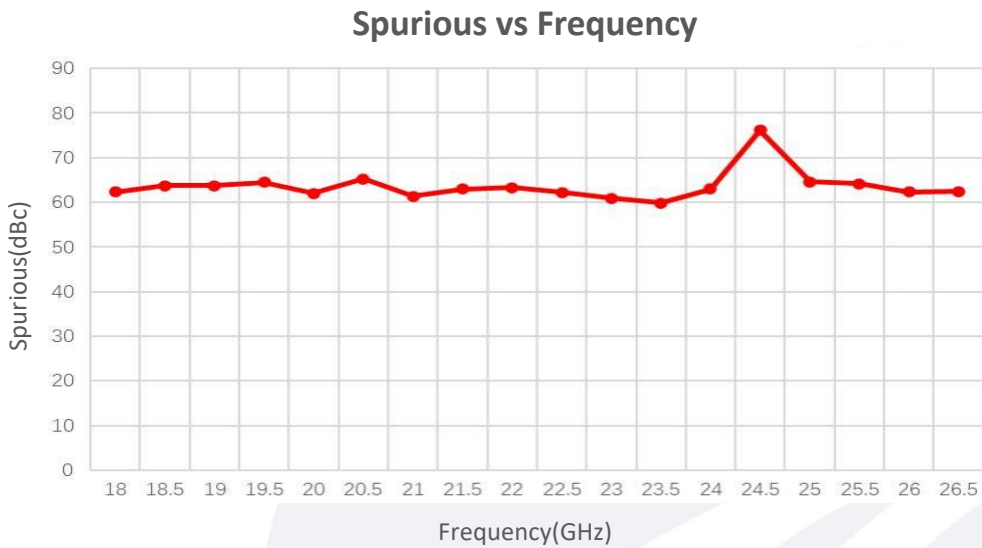
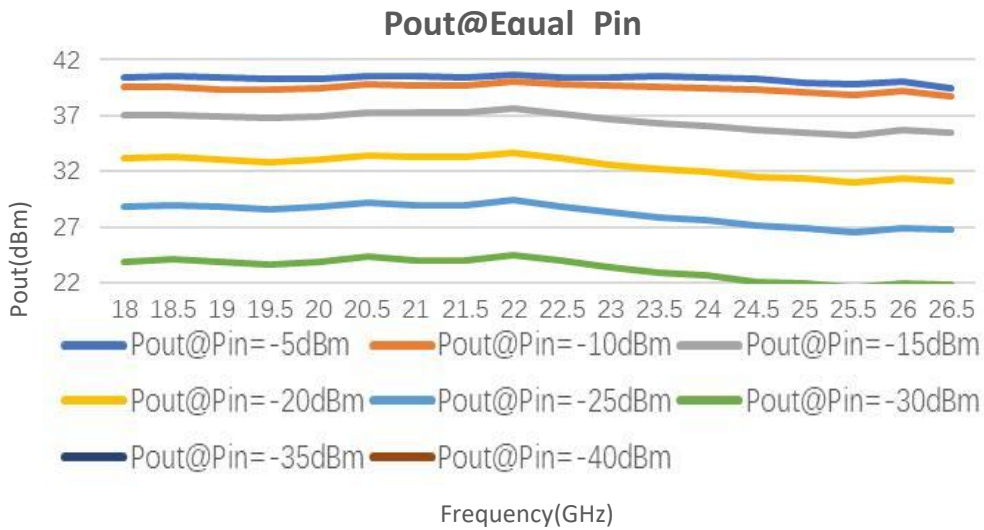


Pout@Pin



Note: Above data is for ref only, actual data may vary from unit to unit depending on operating environment and other factors like material lots etc.

典型曲线 Typical Performance Data:



Note: Above data is for ref only, actual data may vary from unit to unit depending on operating environment and other factors like material lots etc.