

Power Amplifier

0.1-22GHz /35dB Gain/32 dBm Psat

Model: TLPA0.1G22G-35-33

TLPA0.1G22G-35-33 is a power amplifier with a typical small signal gain of 35 dB and Psat of 32 dBm across the frequency range of 0.1 to 22 GHz. The DC power requirement for the amplifier is +24 VDC/0.85 A. The input and output port configuration offers coax adapter structure with SMA female.

Features:

- Frequency range: 0.1-22GHz
- Small Signal Gain: 35dB Typ
- Output Power Psat: 32dBm Typ
- Good Power and Gain Flatness
- 50 Ohm Matched Input / Output

Applications:

- Cellular
- PCN
- GSM
- ISM
- Lab Test

电气特性 Electrical Characteristics:

参数 Parameter	Min	Typ	Max	单位 Units
频率范围 Frequency range	0.1		22	GHz
小信号增益 Small Signal Gain	33	35		dB
增益平坦度 Gain Flatness		±2.5		dB
线性输出功率 Output P1dB		30		dBm
饱和输出功率 Output Psat		32		dBm
输入驻波 Input VSWR		2		:1
输出驻波 Output VSWR		2		:1
直流电压 DC Voltage		24	25	V DC
直流电流 DC Supply Current		850		mA
阻抗 Impedance		50		Ohms

机械特性 Mechanical Specifications:

参数 Parameter	指标 Value	单位 Units
输入/输出接口 Input /Output Connector	SMA Female/SMA Female	
尺寸 Size	60*65*11(Without Heatsink) 60*90*41(With Heatsink)	mm

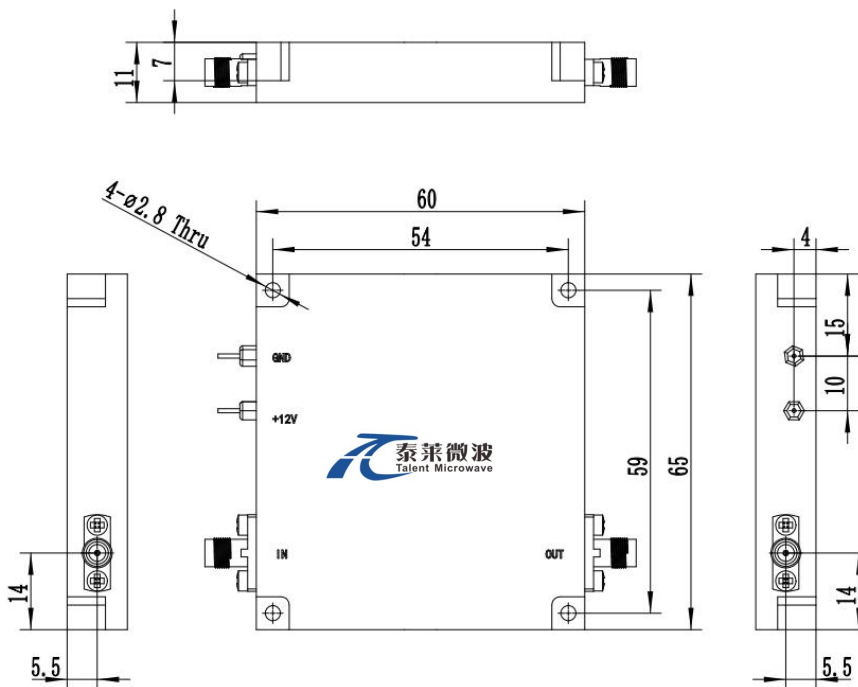
绝对最大值 Absolute Maximum Ratings:

参数 Parameter	指标 Value
供电偏置电压 Supply Bias Voltage	+25V
输入功率 RF Input Power	0 dBm
ESD灵敏度 ESD sensitivity (HBm)	Class 0, passed 150V



外形图 Outline Drawing:

Unit:mm



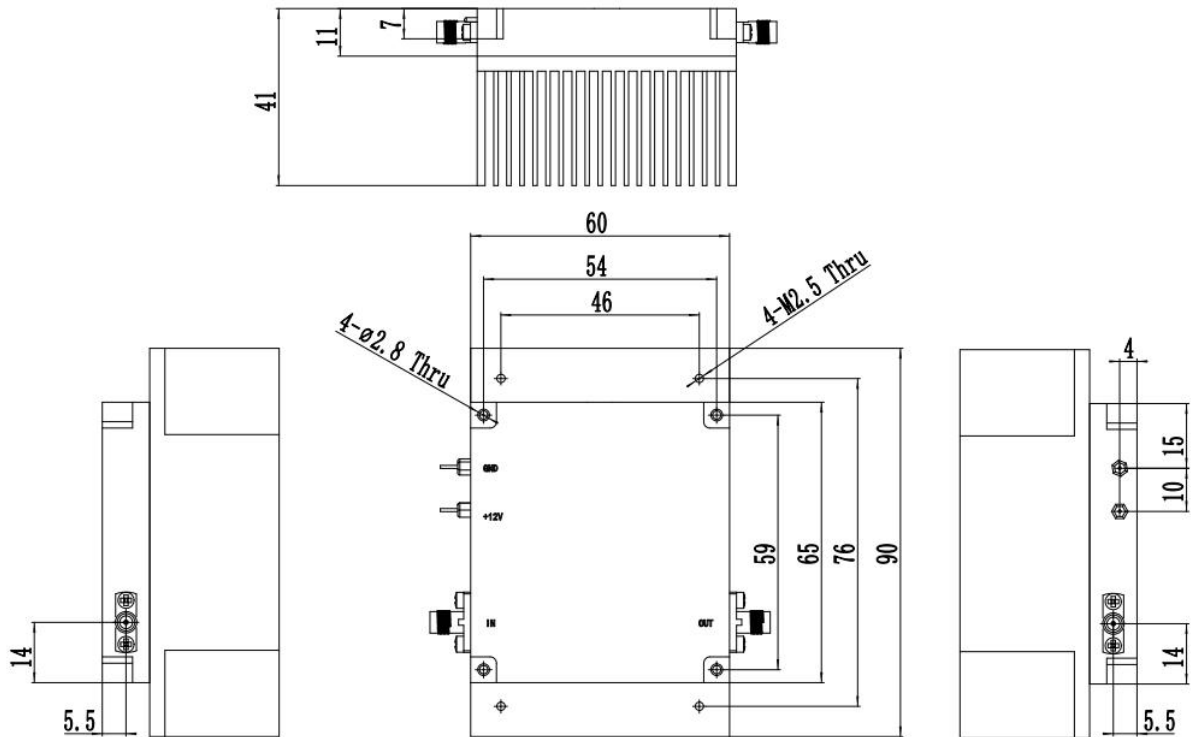
*****Heat Sink Required During Operation**



ESD Protection: Strictly adhere to ESD precautions to prevent electrostatic damage.

外形图 Outline Drawing:

Unit:mm



温度环境 Environmental Conditions:

参数 Parameter	Min	Typ	Max	单位 Units
操作温度 Operating Temperature*	-40		+60	°C
存储温度 Non-operating Temperature*	-50		+70	°C
相对湿度 Relative humidity		95		%
海拔 Altitude	10,000			feet
震动 Shock / Vibration(MIL-STD-810F)	25g rms (15 degree 2KHz) endurance, 1 hour per axis			
冲击 Shock(non operating)	20G for 11msc half sin wave,3 axis both directions			

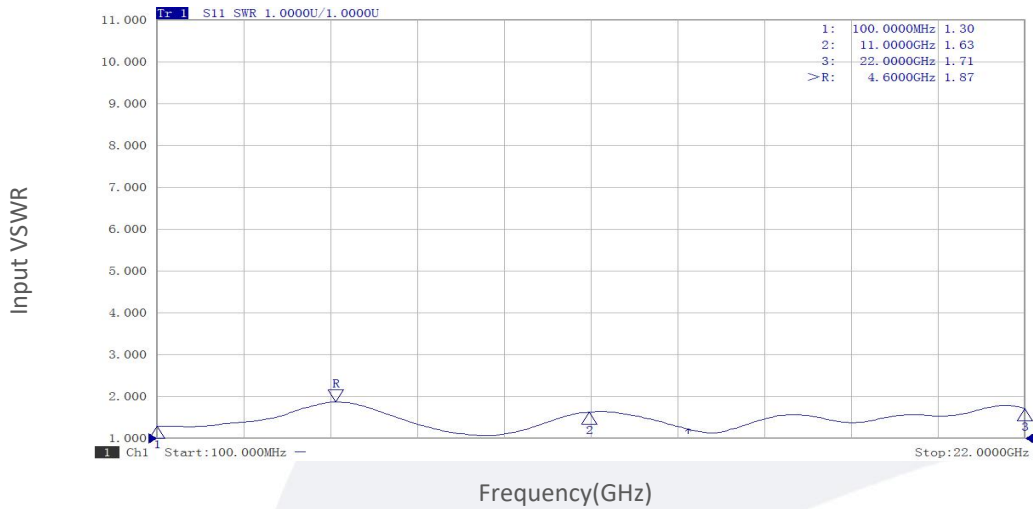
*Note: For a wider temperature range, please consult the manufacturer.

订货信息 Ordering Information:

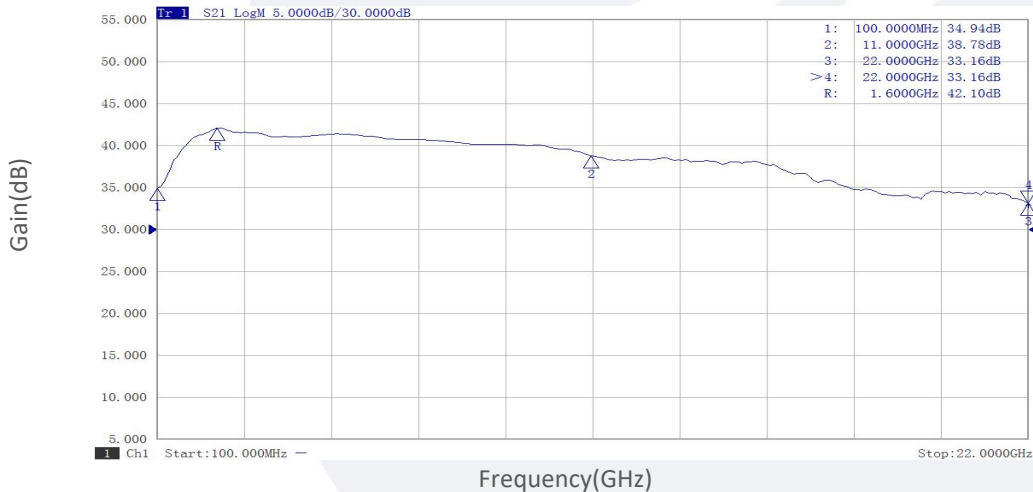
标准型号 Base Number	描述 Description	版本号 Revision
TLPA0.1G22G-35-33	Power amplifier 0.1-22GHz, Gain:35dB,Psat:32dBm,+24V DC,Without Heatsink	Rev.1.1
TLPA0.1G22G-35-33-HS	Power amplifier 0.1-22GHz, Gain:35dB,Psat:32dBm,+24V DC,With Heatsink	Rev.1.1

典型曲线 Typical Performance Data:

Input VSWR vs Frequency



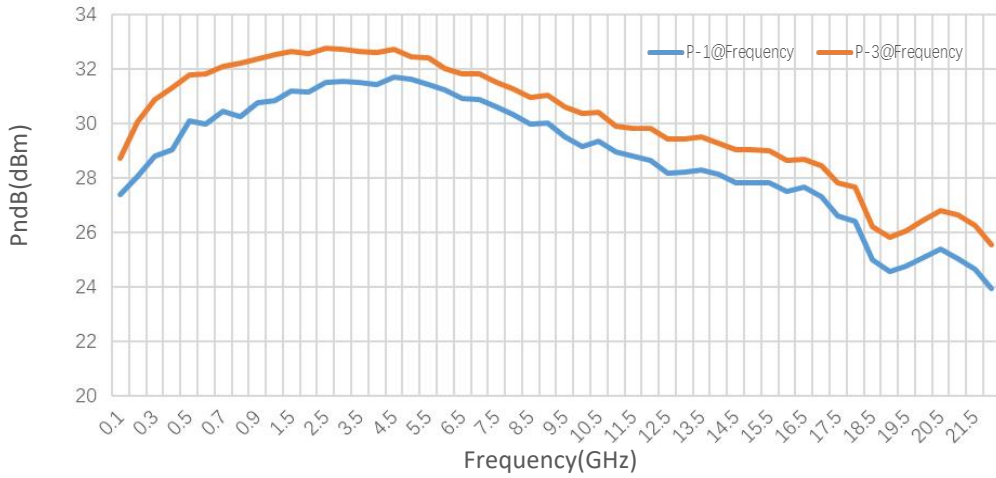
Small Signal Gain vs Frequency



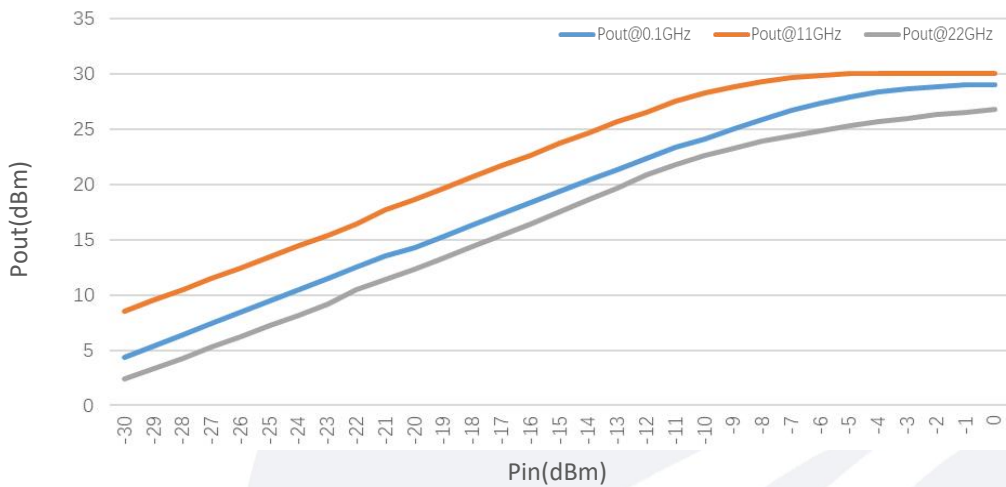
Note: Above data is for ref only, actual data may vary from unit to unit depending on operating environment and other factors like material lots etc.

典型曲线 Typical Performance Data:

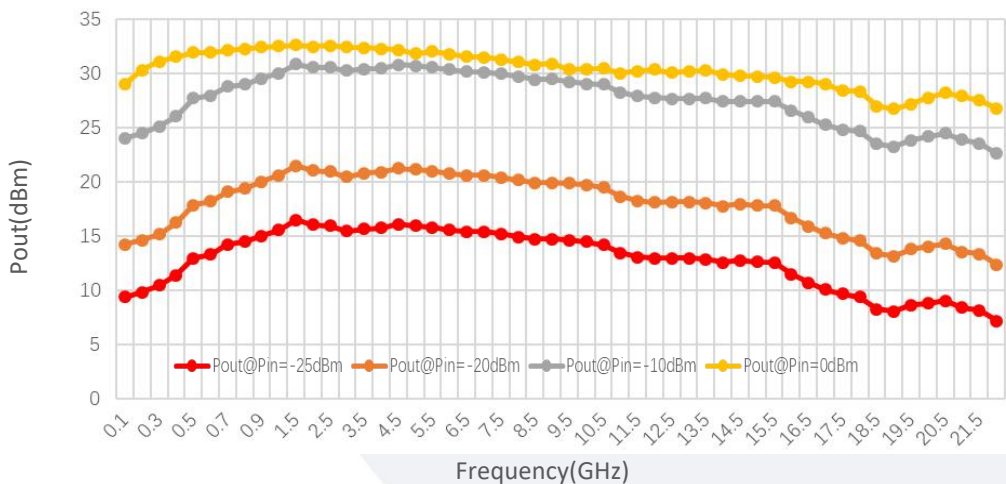
PndB vs Frequency



Pout@Pin

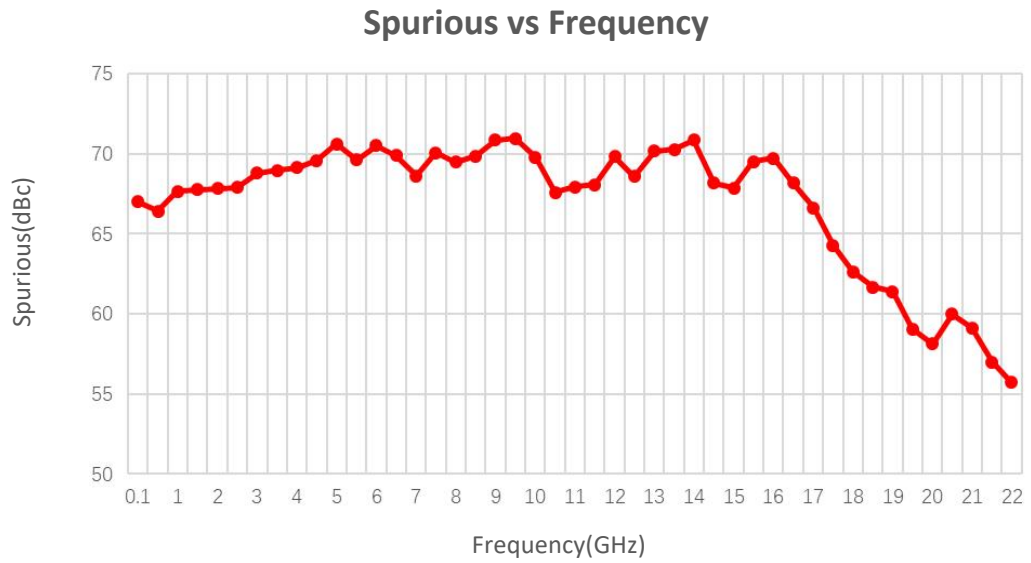


Pout@Equal_Pin



Note: Above data is for ref only, actual data may vary from unit to unit depending on operating environment and other factors like material lots etc.

典型曲线 Typical Performance Data:



Note: Above data is for ref only, actual data may vary from unit to unit depending on operating environment and other factors like material lots etc.