

**Model:TLPA40G67G-39-34**
**Power Amplifier**  
**40-67GHz,Gain:39dB,Psat:34dBm**
**Feature:**

- Ultra Wide Band:40-67GHz
- Gain:39dB Typ
- Psat Output Power:34dBm Typ
- Good Power and Gain Flatness
- 50 Ohm Matched Input / Output

**电气特性 Electrical Specifications:**

参数Parameter		Min	Typ	Max	单位Units
频率范围 Frequency range		40-67			GHz
增益 Gain	40-60G	35	39		dB
	60-67G	33	35		
线性输出功率 Output P1dB			29		dBm
饱和输出功率 Output Psat		33	34		dBm
输入驻波 Input VSWR			5.8		:1
输出驻波 Output VSWR			2.3		:1
直流电压 DC Voltage			+20	+24	V DC
直流电流 DC Sopply Current			2.05		A
阻抗 Impedance		50			Ohms

**机械特性 Mechanical Specifications:**

参数Parameter	指标 Value	单位Units
输入输出接口 Input /Output Connector	1.85 Female/1.85 Female	
直流偏置 DC Bias	Solder Pin	
尺寸 Size	/	mm
重量 Weight	230	g

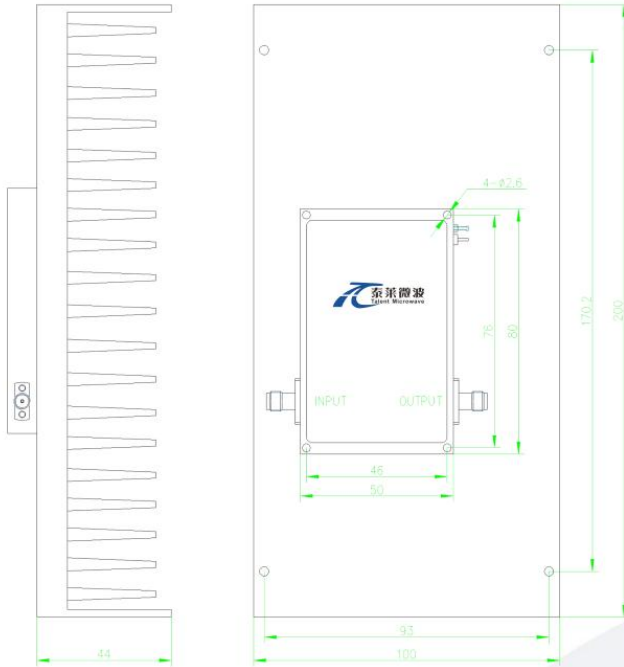
**绝对最大值 Absolute Maximum Ratings:**

参数Parameter	指标 Value
供电偏置电压 Supply Bias Voltage	+24V
输入功率 RF Input Power	15dBm
ESD灵敏度 ESD sensitivity (HBm)	Class 0, passed 150V


**Available 220V System  
Benchtop Amplifier**

外形尺寸 Outline Drawing:

Unit: mm



温度环境 Environmental Conditions:

参数 Parameter	Min	Typ	Max	单位 Units
操作温度 Operating Temperature*	-40		+60	°C
存储温度 Non-operating Temperature*	-50		+70	°C
相对湿度 Relative humidity		95		%
海拔 Altitude		10,000		feet
震动 Shock / Vibration(MIL-STD-810F)		20g,11ms,saw-tooth		
冲击 Shock(non operating)		20G for 11msc half sin wave,3 axis both directions		

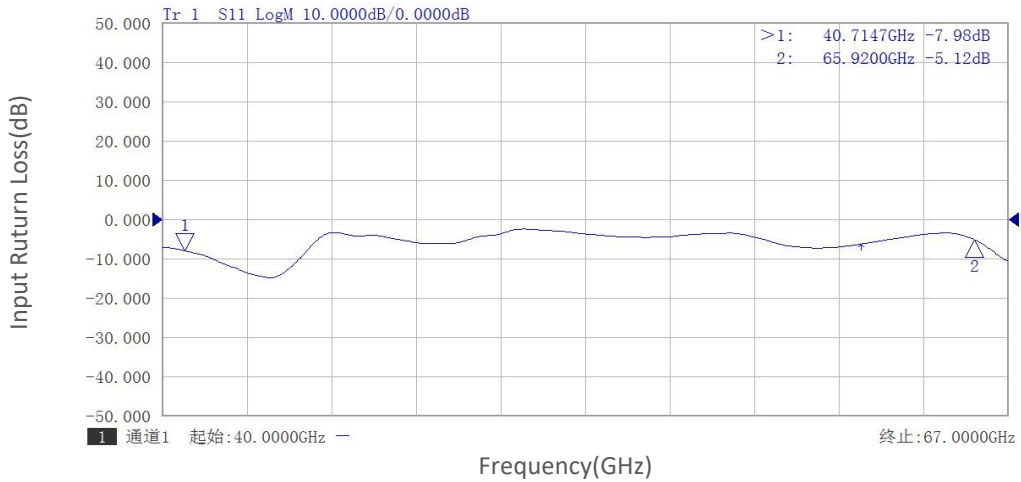
\*Note: For a wider temperature range, please consult the manufacturer.

订货信息 Ordering Information:

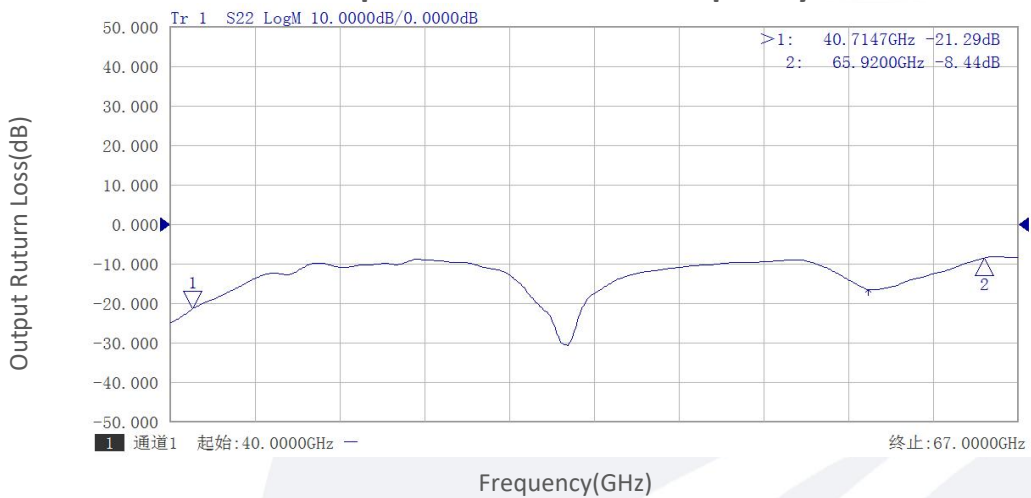
标准型号 Part Number	描述 Description	版本号 Revision
TLPA40G67G-39-34	Power amplifier 40-67GHz,Gain:39dB,Psat:34dBm,+24V DC,Without Heatsink.	Rev.1.1
TLPA40G67G-39-34-HS	Power amplifier 40-67GHz,Gain:39dB,Psat:34dBm,+24V DC,With Heatsink.	Rev.1.1

典型曲线 Typical Performance Data:

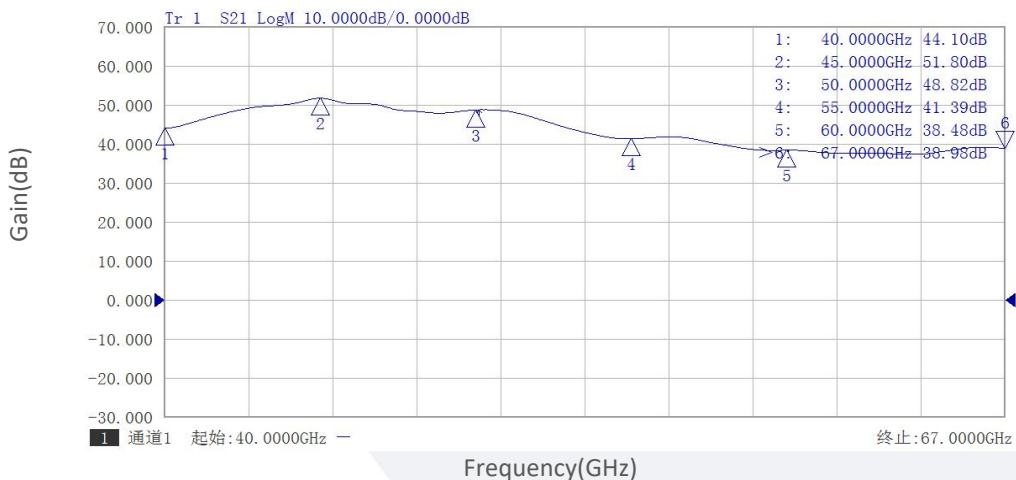
**Input Return Loss vs Frequency**



**Output Return Loss vs Frequency**



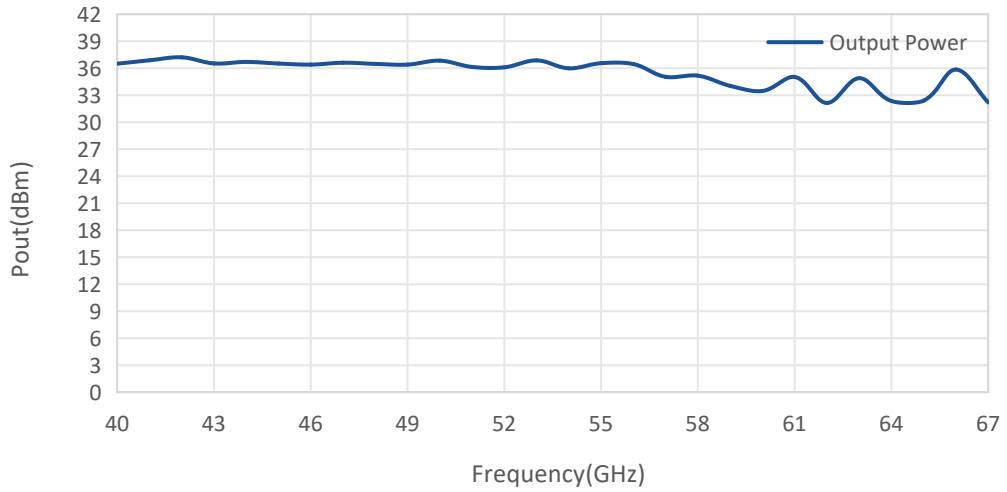
**Small Signal Gain vs Frequency**



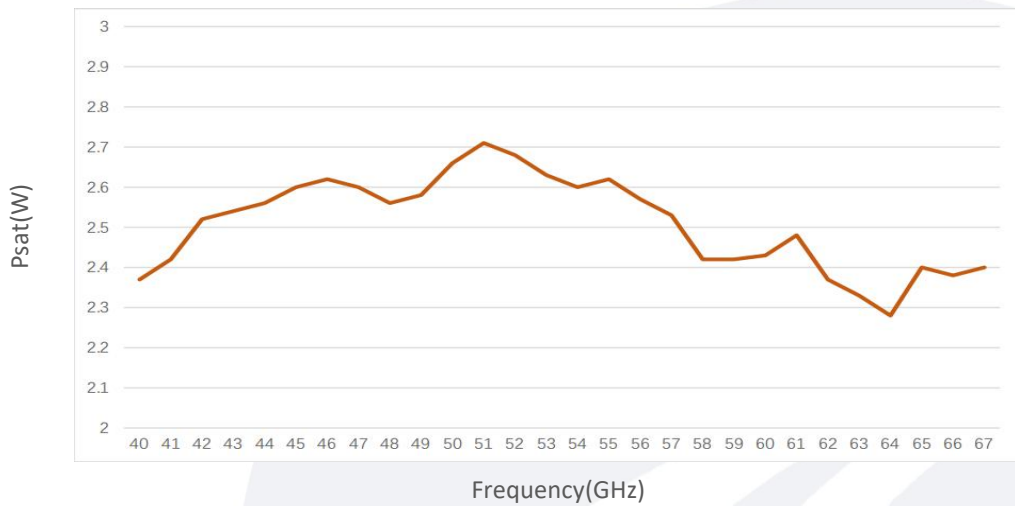
Note: Above data is for ref only, actual data may vary from unit to unit depending on operating environment and other factors like material lots etc.

典型曲线 Typical Performance Data:

**Pout vs Frequency**



**Psat vs Frequency**



Note: Above data is for ref only, actual data may vary from unit to unit depending on operating environment and other factors like material lots etc.