

Model:TLPA27G32G-56-56-BC
**Solid State High Power Amplifier Systems
 27-32GHz,Gain:56dB,Psat:56 dBm,220V AC**
Feature:

- Wide Band: 27-32GHz
- Gain: 56dB Min
- Psat Output Power:56dBm Min
- Protection:Over TEM,over voltage, over current ,over VSWR protection.
- 50 Ohm Matched Input / Output

电气特性 Electrical Specifications:

参数Parameter	代码 Symbo	Min	Typ	Max	单位Units
频率范围 Frequency range	BW	27-32			GHz
增益 Gain	GP	56			dB
增益平坦度 Gain flatness	Δ GL		± 3		dB
饱和输出功率 Output Psat	Psat	56			dBm
杂散 Spurious	Spur			-55	dBc
输入驻波 Input VSWR	VSWRin			2.0	:1
交流电压 AC Voltage	Vac	220			V AC
功耗 Power Consumption	Pdiss		5500	6000	W
阻抗 Impedance	I/O-IMP	50			Ohms

机械特性 Mechanical Specifications:

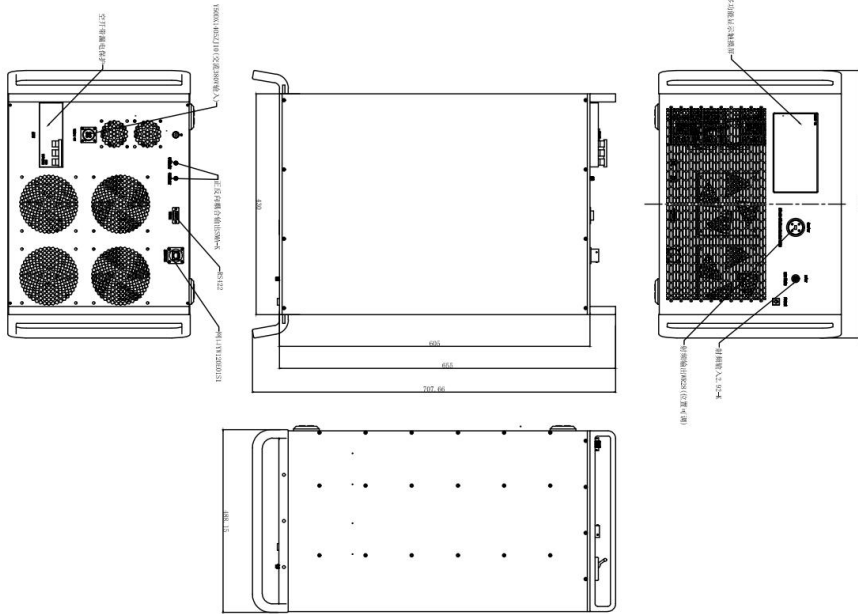
参数 Parameter	指标 Value	单位Units
输入/输出接口 Input /Output Connector	2.92mm Female/WR-28	
正向/反向耦合 Forward/Reverse Coupling	2.92mm Female/2.92mm Female	
通信接口 Communication Connector	DB9/RJ-45	
尺寸 Size	19 Inch 8U*550	mm
重量 Weight	≤ 80	Kg

绝对最大值 Absolute Maximum Ratings:

参数 Parameter	指标 Value
输入功率 RF Input Power	10 dBm
ESD灵敏度 ESD sensitivity (HBm)	Class 0, passed 150V

外形尺寸 Outline Drawing:

Unit: mm



主要功能 Key Features:



OBSERVE PRECAUTIONS
ELECTROSTATIC SENSITIVE
DEVICES

参数 Parameter	特点 Advantages
控制功能 Control functions	1, Power setting On/Off 2, ALC automatic level control
显示功能 Display functions	Displays the current output power, reflected power, and fault information
内置保护功能 Protection functions	1, Over TEM 2, Over voltage 3, Over current protection 4, Over VSWR
控制 Control	RS422/Ethernet
冷却系统 Cooling system	Built in Cooling system, forced air cooling

温度环境 Environmental Conditions:

参数 Parameter	Min	Typ	Max	单位 Units
操作温度 Operating Temperature*	-20		+50	°C
存储温度 Non-operating Temperature*	-45		+65	°C
相对湿度 Relative humidity		95		%
海拔 Altitude	10000			feet
震动 Shock / Vibration(MIL-STD- 810F)	25g rms (15 degree 2KHz) endurance, 1 hour per axis			
冲击 Shock(non operating)	20G for 11msc half sin wave,3 axis both directions			

*Note: For a wider temperature range, please consult the manufacturer.

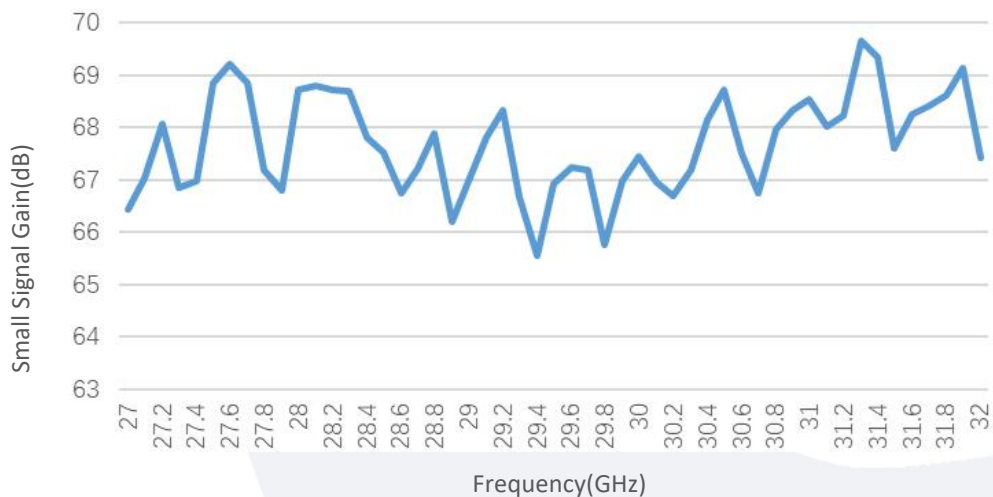
订货信息 Ordering Information:

标准型号 Part Number	描述 Description	版本号 Revision
TLPA27G32G-56-56-BC	Solid State High Power Amplifier Systems 27-32GHz,Gain:56dB,Psat:56 dBm,220V AC,Built in Fan Cooling	Rev.1.0

典型曲线 Typical Performance Data:

Test TEM=21°C:

Small Signal Gain vs Frequency

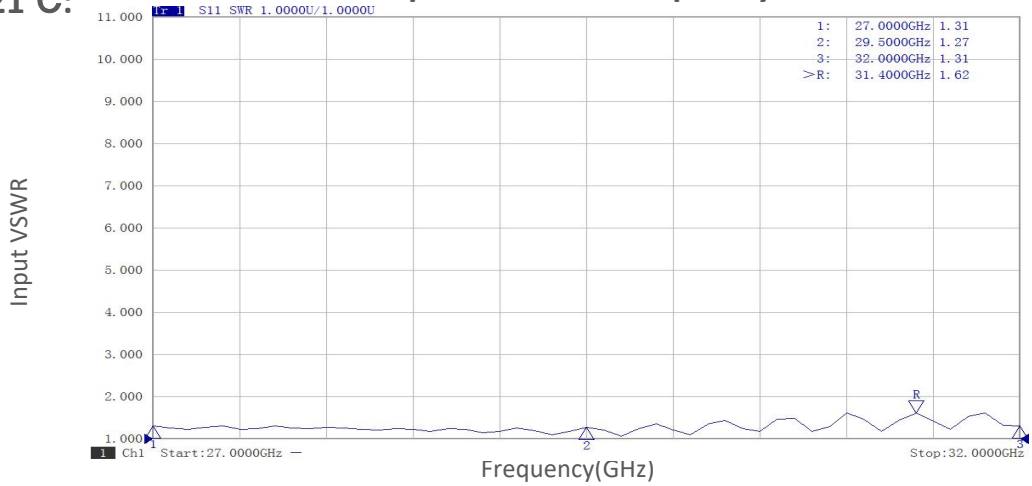


Note: Above data is for ref only, actual data may vary from unit to unit depending on operating environment and other factors like material lots etc.

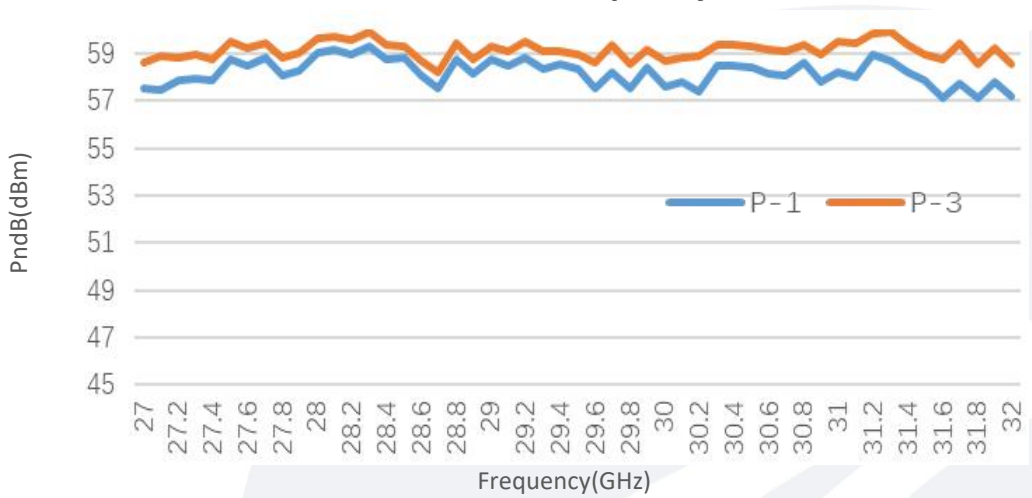
典型曲线 Typical Performance Data:

Test TEM=21°C:

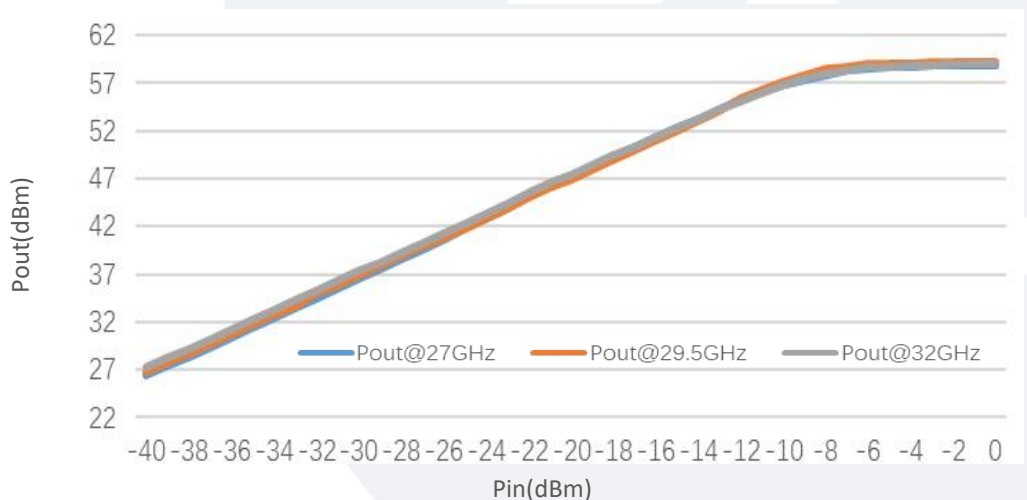
Input VSWR vs Frequency



PndB vs Frequency



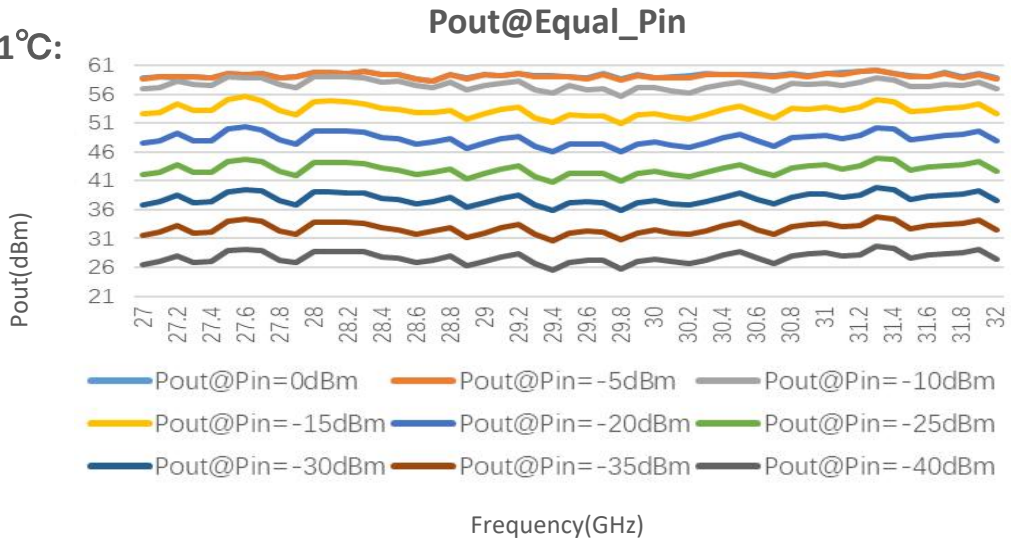
Pout@Pin



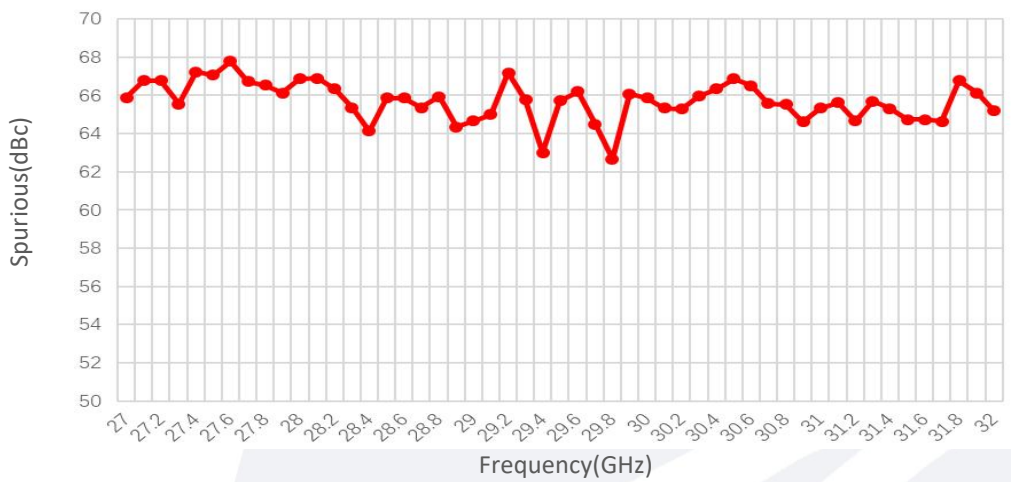
Note: Above data is for ref only, actual data may vary from unit to unit depending on operating environment and other factors like material lots etc.

典型曲线 Typical Performance Data:

Test TEM=21°C:

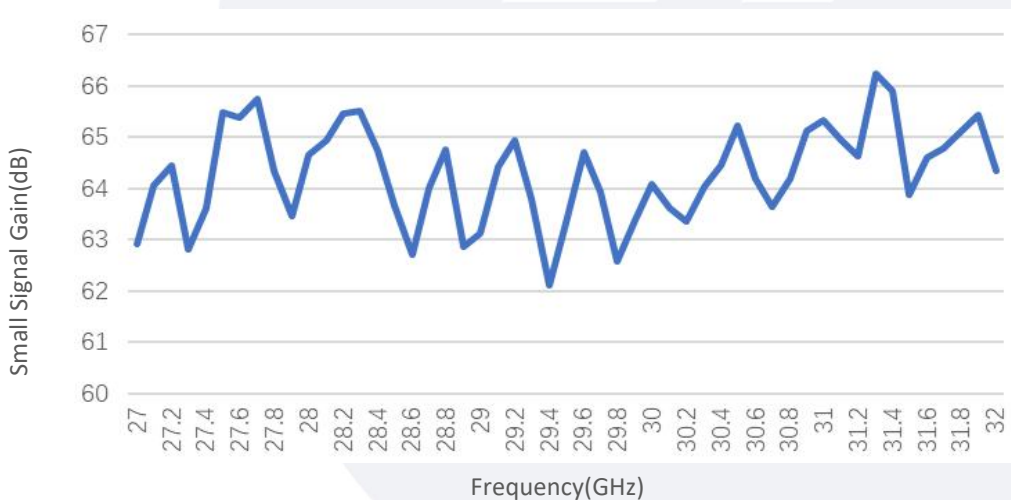


Spurious vs Frequency



Test TEM=50°C:

Small Signal Gain vs Frequency

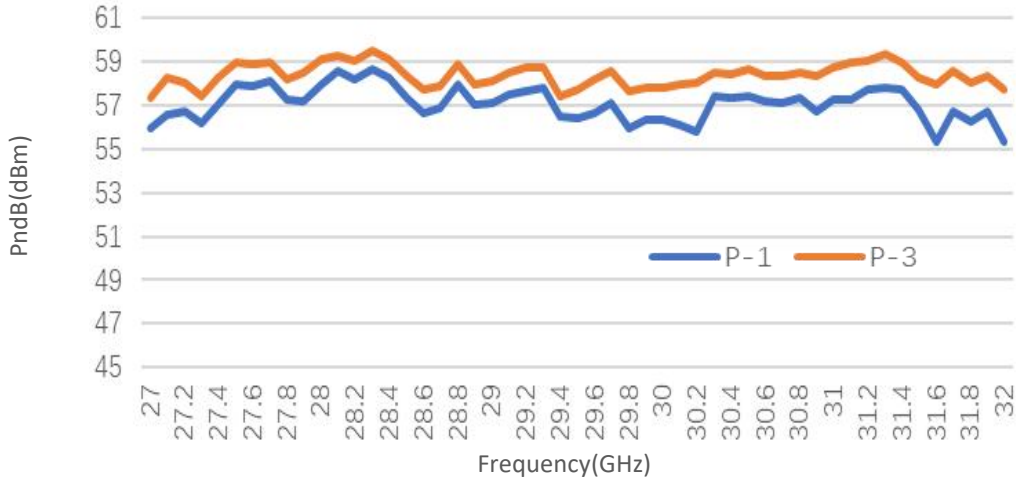


Note: Above data is for ref only, actual data may vary from unit to unit depending on operating environment and other factors like material lots etc.

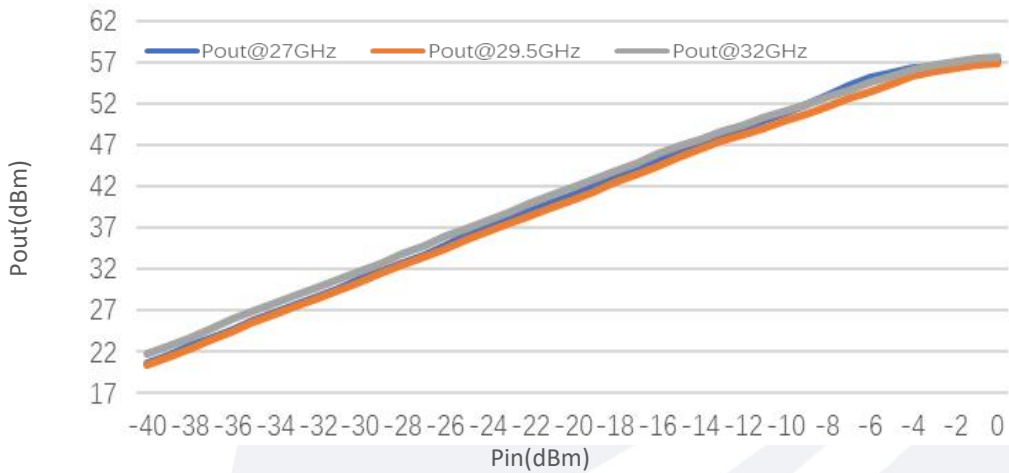
典型曲线 Typical Performance Data:

Test TEM=50°C:

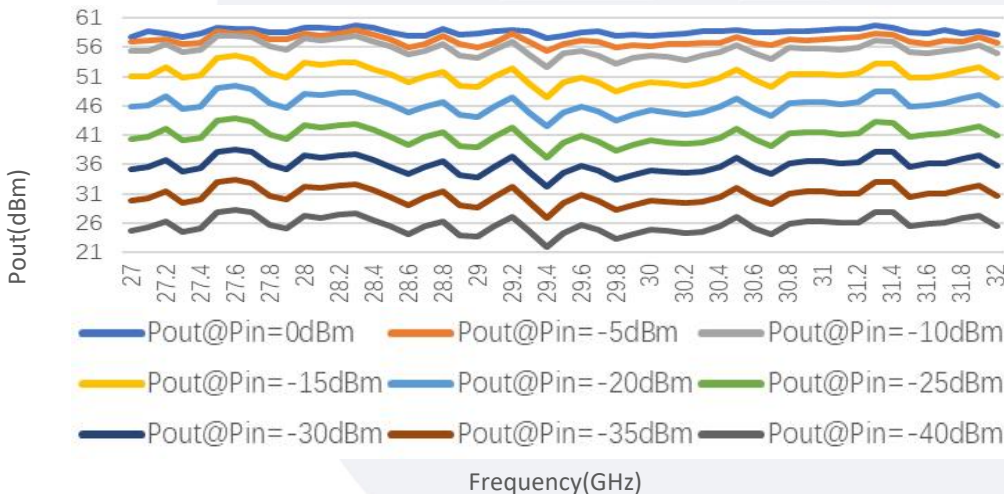
PndB vs Frequency



Pout@Pin



Pout@Equal_Pin

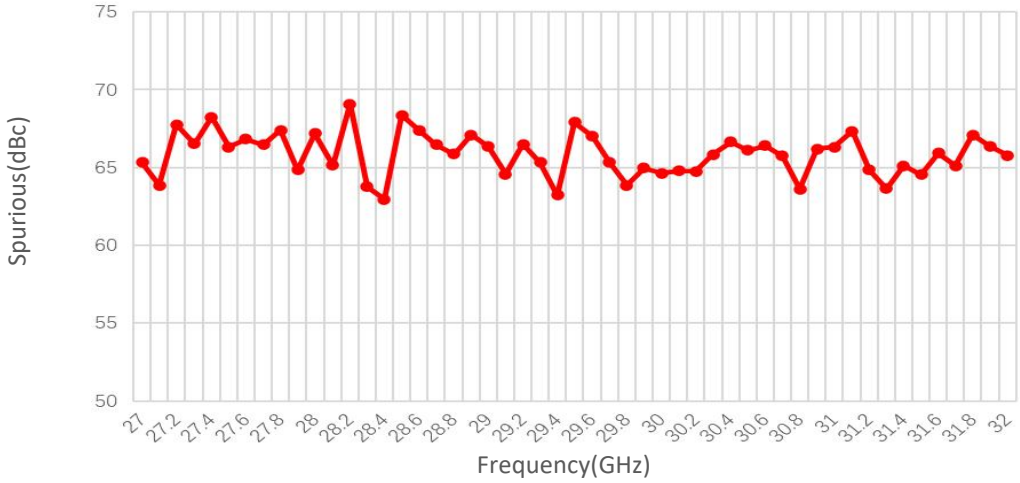


Note: Above data is for ref only, actual data may vary from unit to unit depending on operating environment and other factors like material lots etc.

典型曲线 Typical Performance Data:

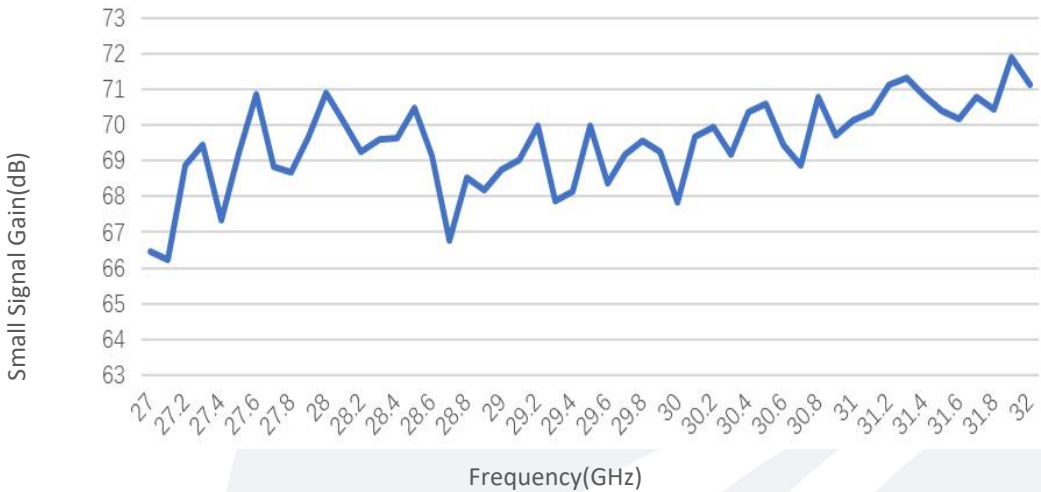
Test TEM=50°C:

Spurious vs Frequency

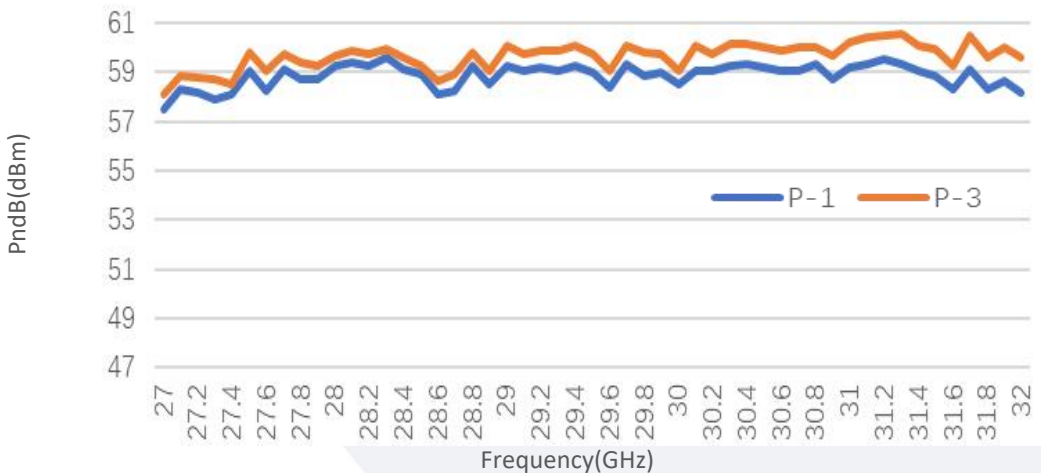


Test TEM=-20°C:

Small Signal Gain vs Frequency



PndB vs Frequency

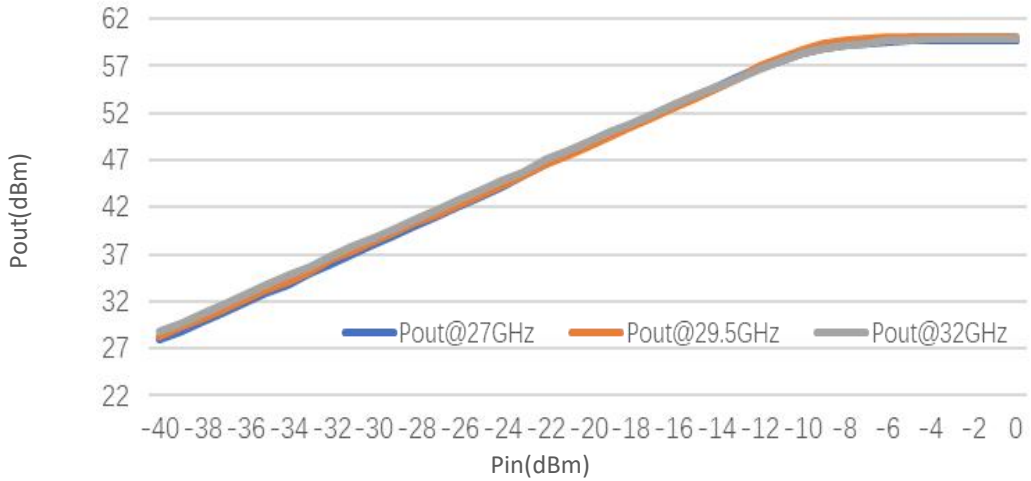


Note: Above data is for ref only, actual data may vary from unit to unit depending on operating environment and other factors like material lots etc.

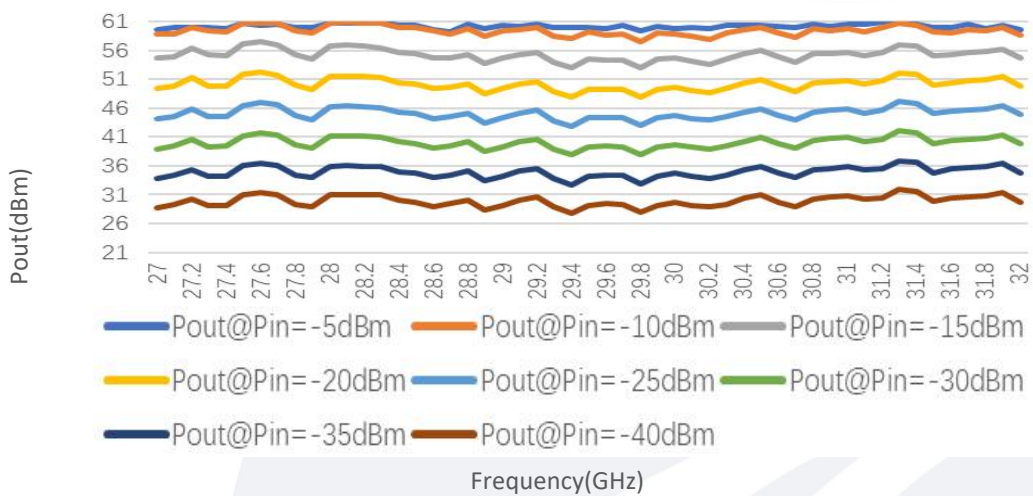
典型曲线 Typical Performance Data:

Test TEM=-20°C:

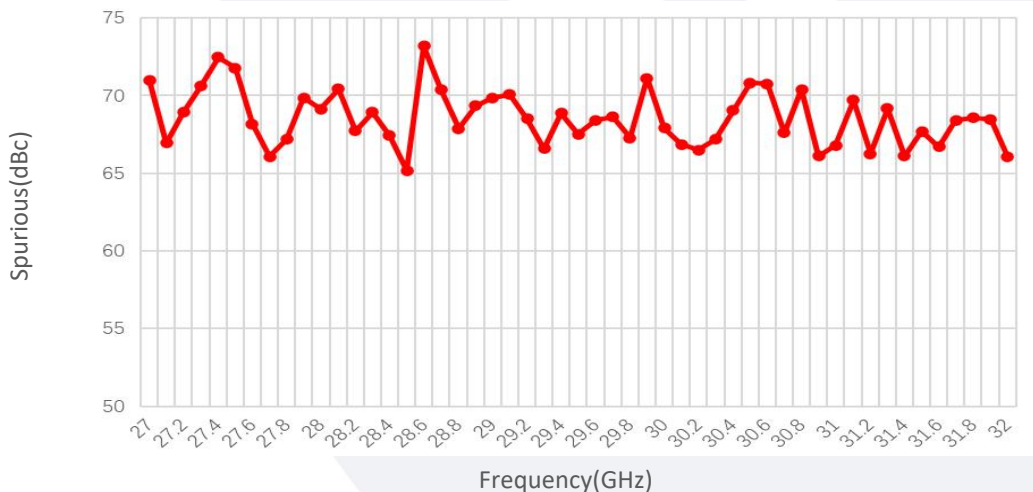
Pout@Pin



Pout@Equal_Pin



Spurious vs Frequency



Note: Above data is for ref only, actual data may vary from unit to unit depending on operating environment and other factors like material lots etc.