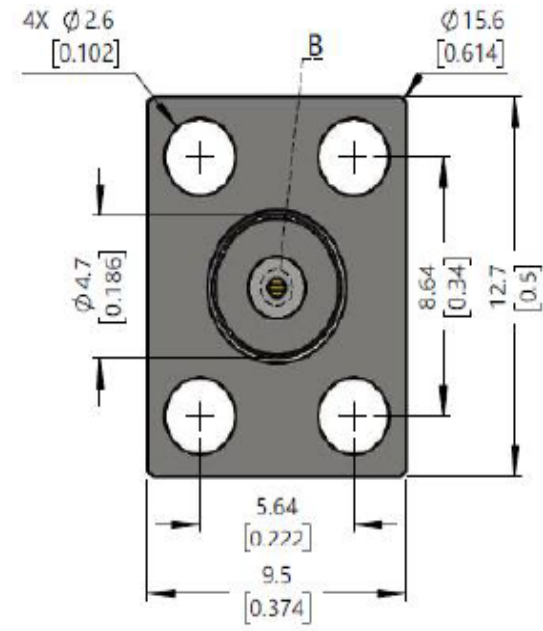


DETAIL B(20:1)



Electrical & Environmental Characteristics	
Impedance	50 Ω
Insulation Resistance	5000 M Ω
Operating Frequency	DC~26.5GHz
Dielectric Withstanding Voltage	1000V
VSWR	≤ 1.15
Insertion Loss	$\leq 0.05 * \text{Sqrt}(f_GHz)$
Operating Temperature	- 55~+165 $^{\circ}C$
Material & Coat-Plating	
Inner Conductor	Beryllium Copper, Gold
Dielectric	PTFE
Body	Stainless Steel, Passivated
Coupling Nut	N/A

No.	Model	D(Diameter)	L(Length)	T(Thickness)
1	SMA-KFD403C11	0.64 [0.025]	4 [0.157]	0.2 [0.008]
2	SMA-KFD403C11-04	0.64 [0.025]	1 [0.039]	0.2 [0.008]
3	SMA-KFD403C11-787	0.64 [0.025]	2 [0.079]	0.2 [0.008]
4	SMA-KFD403C11-2M	0.64 [0.025]	6 [0.236]	0.2 [0.008]

THIS DRAWING IS A CONTROLLED DOCUMENT		DWN	Suzhou Talent Microwave, Inc		
		CHK			
Unit mm	TOLERANCES UNLESS OTHERWISE SPECIFIED 0 PLC ± 0.25 1 PLC ± 0.15 2 PLC ± 0.12 3 PLC \pm 3 PLC \pm ANGLES $\pm 1^{\circ}$	APVD	Product Model		
		PRODUCT SPEC	SMA-KFD403C11-2M SMA Female Flange Connector		
		APPLICATION SPEC	SIZE A4	GAGE CODE OT8L4	DRAWING NO
MATEIAL SEE TABLE	FINISH SEE TABLE	WEIGHT	CUSTOMER DRAWING		SHEET1 OF 1
					RVE 1