

Model: TLPA18G26.5G-40-40-BC
**Solid State High Power Amplifier Systems
 18-26.5GHz, Gain: 43dB, Psat: 40dBm, 220V AC**
Feature:

- Wide Band: 18-26.5GHz
- Gain: 43dB Min
- Psat Output Power: 40dBm Min
- Protection: Over TEM, over voltage, over current, over VSWR protection.
- 50 Ohm Matched Input / Output


电气特性 Electrical Specifications:

参数Parameter	代码 Symbo	Min	Typ	Max	单位Units
频率范围 Frequency range	BW	18-26.5			GHz
小信号增益 Small Signal Gain	SSGP		46		dB
功率增益 Power Gain@Pout=40dBm	GP	43			dB
增益平坦度 Gain flatness	Δ GL		± 1.6	± 2	dB
饱和输出功率 Output Psat	Psat	40	41		dBm
饱和功率平坦度 Saturated Power flatness	Δ PPL			± 1	dB
线性输出功率 Output P1dB	P1dB	35			dBm
杂散 Spurious@Pout=40dBm	Spur			-50	dBc
谐波 Harmonics@Pout=40dBm	HAM			-20	dBc
输入驻波 Input VSWR	VSWRin		1.3		:1
交流电压 AC Voltage	Vac	220			V AC
功耗 Power Consumption	Pdiss			70	W
阻抗 Impedance	I/O-IMP	50			Ohms

机械特性 Mechanical Specifications:

参数 Parameter	指标 Value	单位Units
输入/输出接口 Input/Output Connector	2.92mm Female/2.92mm Female	
AC加电控制 AC Power Interface	Air switch	
尺寸 Size	19 Inch 2U	mm
重量 Weight	20	Kg

绝对最大值 Absolute Maximum Ratings:

参数 Parameter	指标 Value
供电偏置电压 Supply Bias Voltage	260V AC
输入功率 RF Input Power	10 dBm
ESD灵敏度 ESD sensitivity (HBm)	Class 0, passed 150V

外形尺寸 Outline Drawing:

Unit: mm



主要功能 Key Features:



OBSERVE PRECAUTIONS
ELECTROSTATIC SENSITIVE
DEVICES

参数 Parameter	特点 Advantages
控制Control	Ethernet RJ-45 TCP/IP
内置保护功能 Protection functions	1,Over TEM 2,Over voltage 3,Over current protection 4,Over VSWR
控制功能 Control functions	1,Power setting On/Off 2,ALC On/Off
冷却系统 Cooling system	Built in Cooling system,forced air cooling

温度环境 Environmental Conditions:

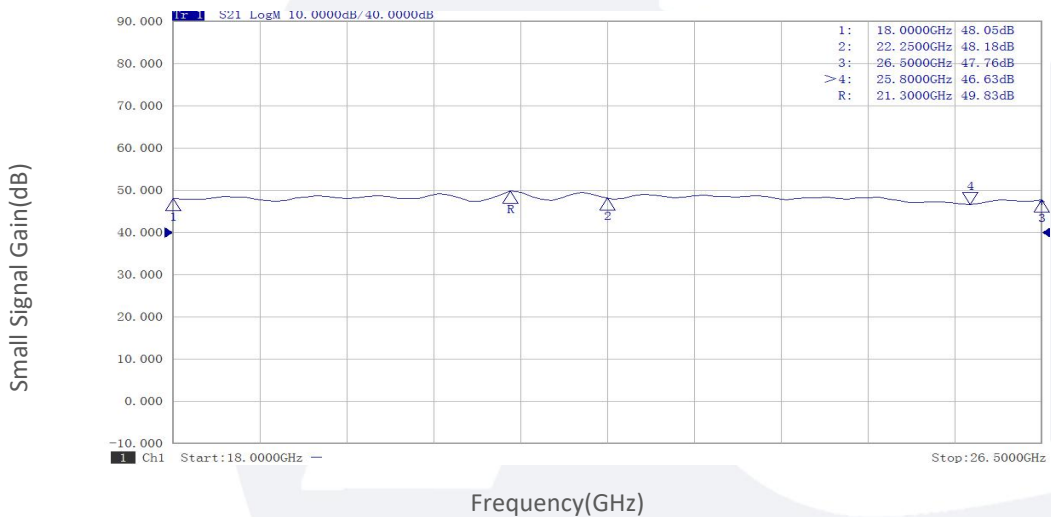
参数 Parameter	Min	Typ	Max	单位 Units
操作温度 Operating Temperature	-20		+50	°C
存储温度 Non-operating Temperature	-45		+65	°C
相对湿度 Relative humidity		95		%
海拔 Altitude	50000			feet
震动 Shock / Vibration(MIL-STD- 810F)	25g rms (15 degree 2KHz) endurance, 1 hour per axis			
冲击 Shock(non operating)	20G for 11msc half sin wave,3 axis both directions			

订货信息 Ordering Information:

标准型号 Part Number	描述 Description	版本号 Revision
TLPA18G26.5G-40-40-BC	Solid State High Power Amplifier Systems 18-26.5GHz,Gain:43dB,Psat:40dBm,220V AC,Built in Fan Cooling	Rev.1.0

典型曲线 Typical Performance Data:

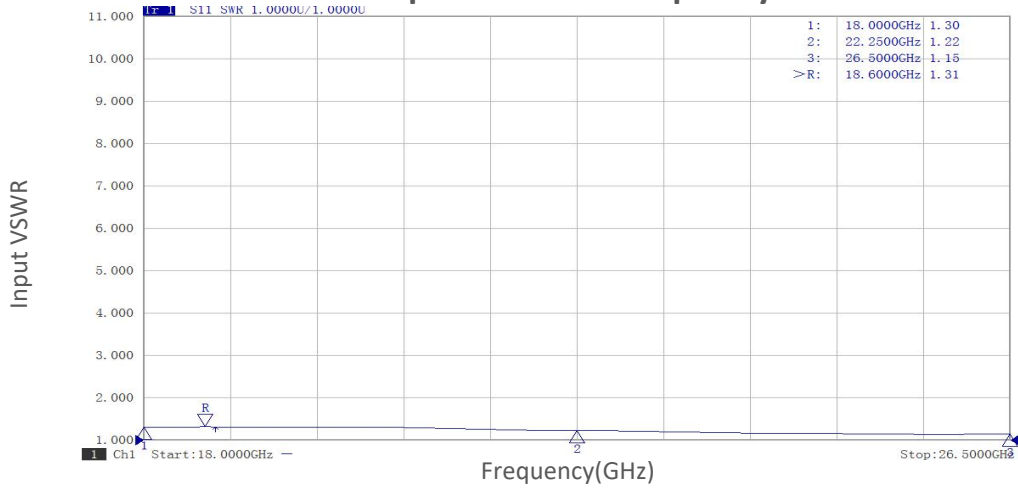
Small Signal Gain vs Frequency



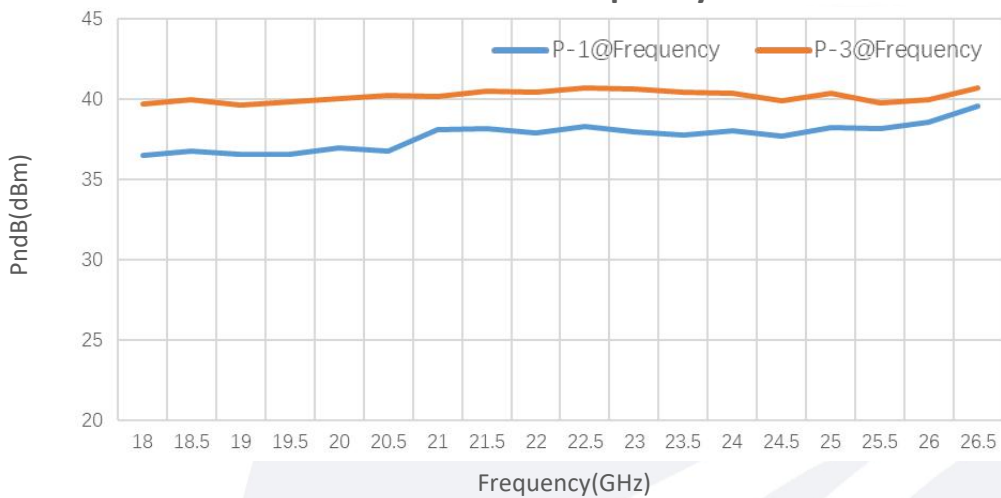
Note: Above data is for ref only, actual data may vary from unit to unit depending on operating environment and other factors like material lots etc.

典型曲线 Typical Performance Data:

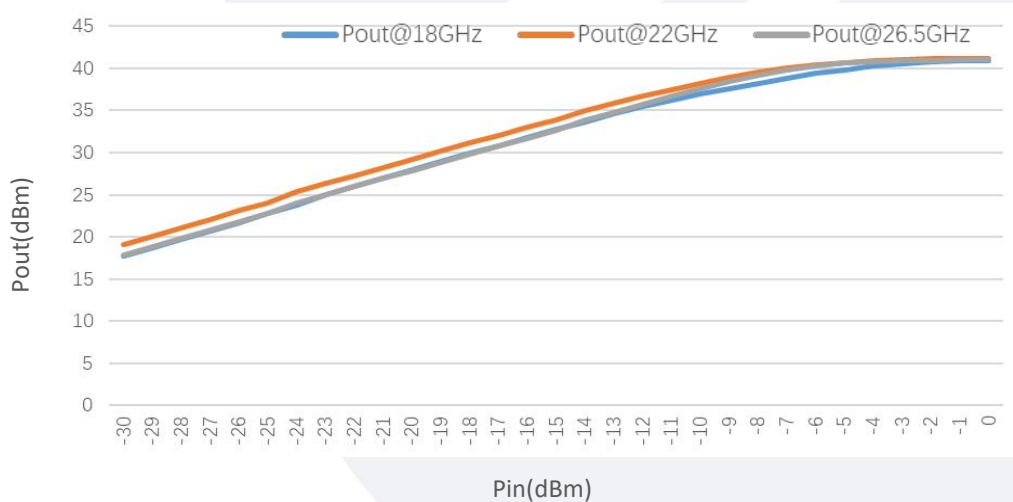
Input VSWR vs Frequency



PndB vs Frequency



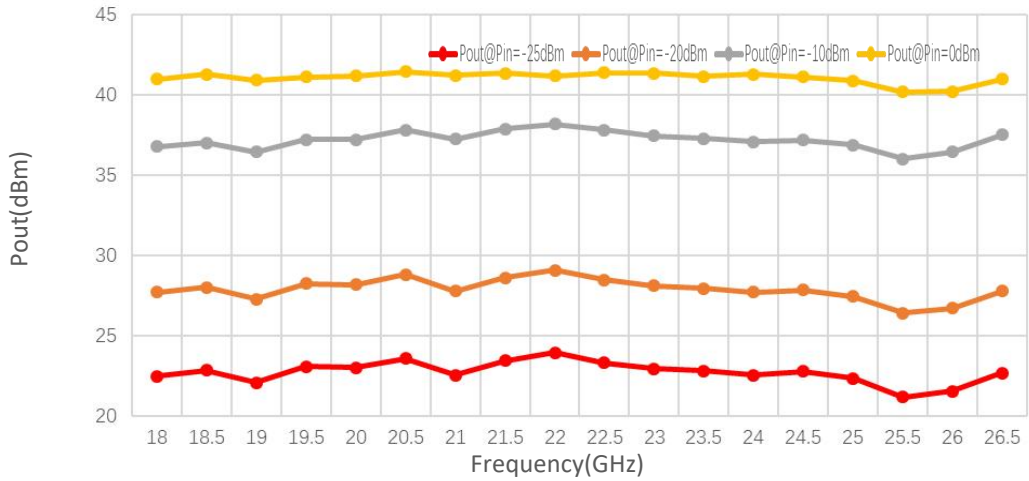
Pout@Pin



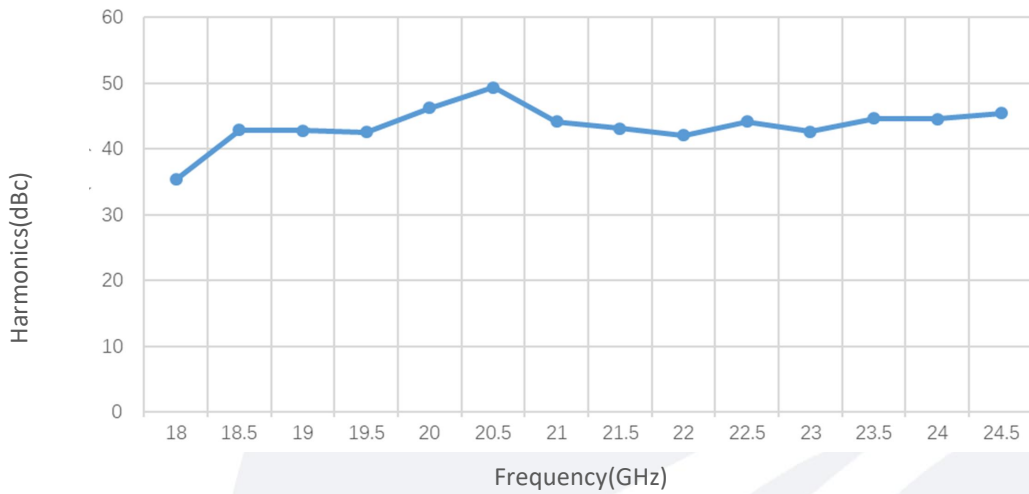
Note: Above data is for ref only, actual data may vary from unit to unit depending on operating environment and other factors like material lots etc.

典型曲线 Typical Performance Data:

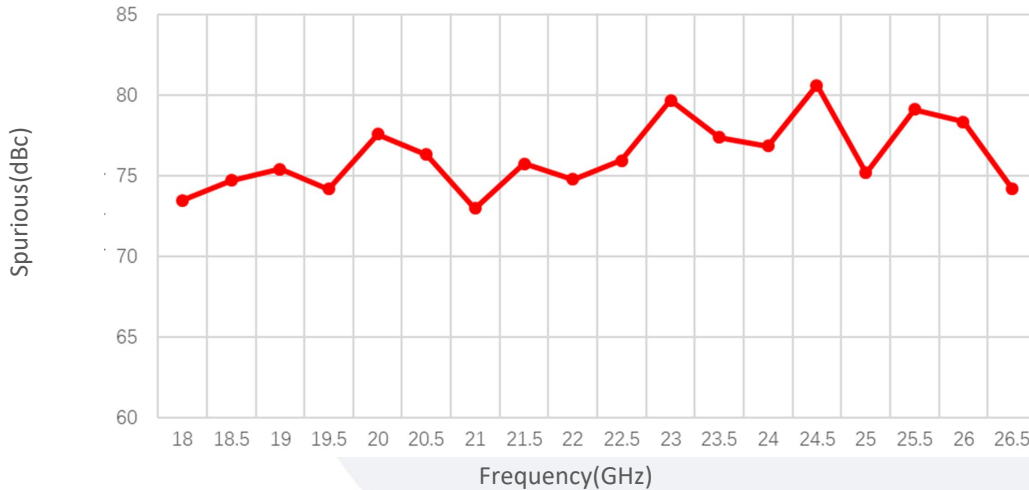
Pout@Equal_Pin



Harmonics vs Frequency



Spurious vs Frequency



Note: Above data is for ref only, actual data may vary from unit to unit depending on operating environment and other factors like material lots etc.