

Model:TLPA26.5G40G-52-51-BC
**Solid State High Power Amplifier Systems
 26.5-40GHz,Gain:52dB,Psat:51dBm,220V AC**
Feature:

- Wide Band: 26.5-40GHz
- Gain: 52dB Min
- Psat Output Power:51dBm Min
- Protection:Over TEM,over voltage, over current ,over VSWR protection.
- 50 Ohm Matched Input / Output


电气特性 Electrical Specifications:

参数Parameter	代码 Sybo	Min	Typ	Max	单位Units
频率范围 Frequency range	BW	26.5-40			GHz
增益 Gain	GP	52			dB
增益平坦度 Gain flatness	Δ GL		± 4.5		dB
饱和输出功率 Output Psat	Psat	51	53		dBm
线性输出功率 Output P1dB	P1dB		52		dBm
杂散 Spurious	Spur			-50	dBc
谐波 Harmonics	HAM			-20	dBc
输入驻波 Input VSWR	VSWRin		2	2.5	:1
交流电压 AC Voltage	Vac	220			V AC
功耗 Power Consumption	Pdiss	1850@Max			Watts
阻抗 Impedance	I/O-IMP	50			Ohms

机械特性 Mechanical Specifications:

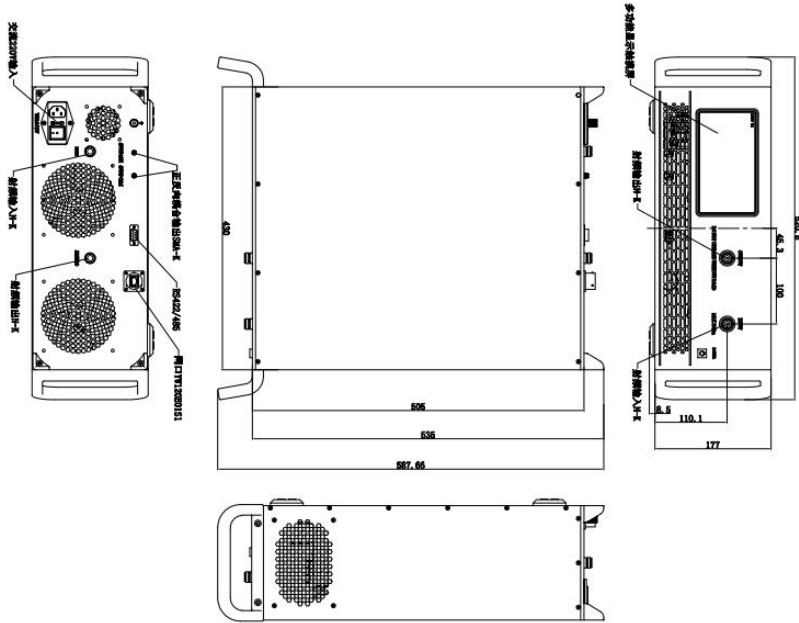
参数 Parameter	指标 Value	单位Units
输入/输出接口 Input/Output Connector	N Female/WR28	
正向/反向耦合 Forward/Reverse Coupling Connector	2.92 Female/2.92 Female	
通信接口 Communication Interfaces	J30J-9ZKP	
尺寸 Size	19 Inch 5U*550 depth	mm
重量 Weight	35	Kg

绝对最大值 Absolute Maximum Ratings:

参数 Parameter	指标 Value
输入功率 RF Input Power	10 dBm
ESD灵敏度 ESD sensitivity (HBm)	Class 0, passed 150V

外形尺寸 Outline Drawing:

Unit: mm



主要功能 Key Features:



OBSERVE PRECAUTIONS
ELECTROSTATIC SENSITIVE
DEVICES

参数 Parameter	特点 Advantages
控制 Control	RS422/LAN, Gain adjustment, State query
内置保护功能 Protection functions	1, Over TEM 2, Over voltage 3, Over current protection 4, Over VSWR
控制功能 Control functions	1, Power setting On/Off
冷却系统 Cooling system	Built in Cooling system, forced air cooling

温度环境 Environmental Conditions:

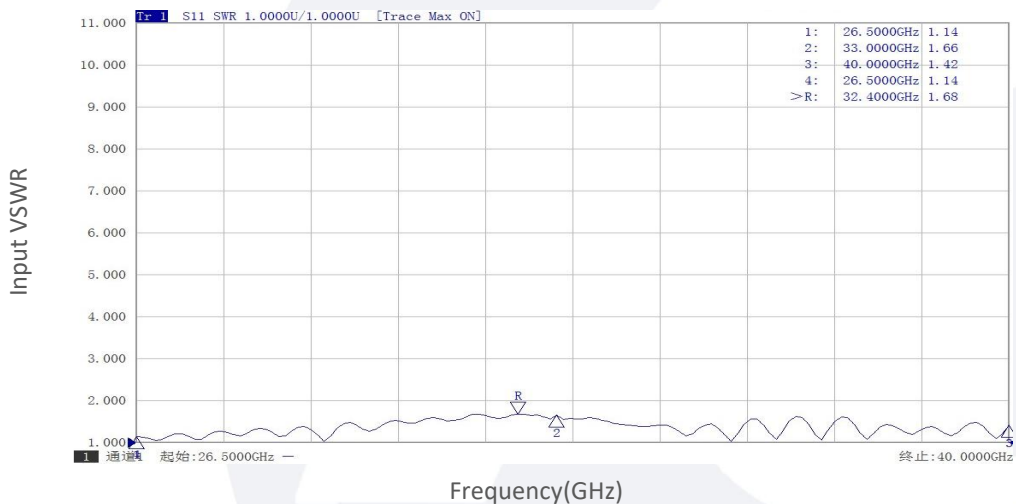
参数 Parameter	Min	Typ	Max	单位 Units
操作温度 Operating Temperature	-20		+50	°C
存储温度 Non-operating Temperature	-45		+65	°C
相对湿度 Relative humidity		95		%
海拔 Altitude	50000			feet
震动 Shock / Vibration(MIL-STD- 810F)	25g rms (15 degree 2KHz) endurance, 1 hour per axis			
冲击 Shock(non operating)	20G for 11msc half sin wave,3 axis both directions			

订货信息 Ordering Information:

标准型号 Part Number	描述 Description	版本号 Revision
TLPA26.5G40G-52-51-BC	Solid State High Power Amplifier Systems 26.5-40GHz,Gain:52dB,Psat:51dBm,220V AC,Built in Fan Cooling	Rev.1.0

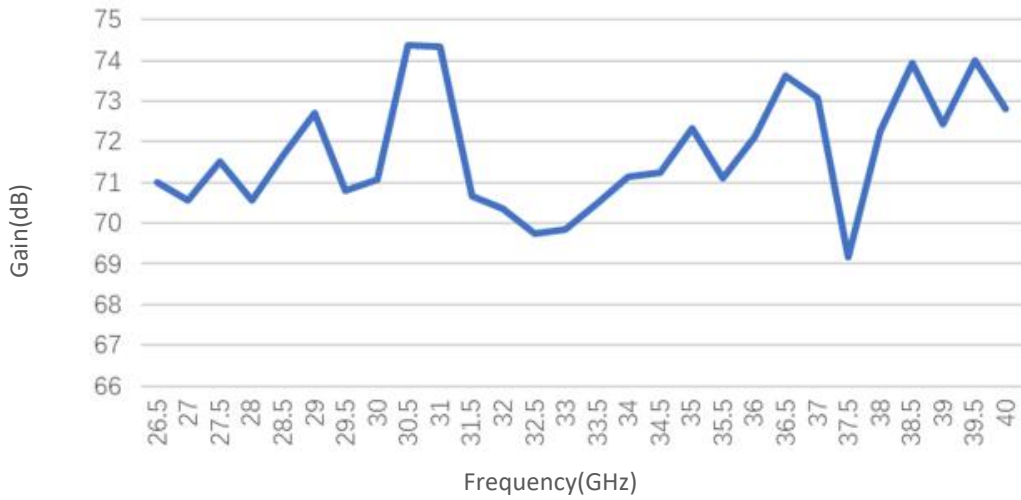
典型曲线 Typical Performance Data:

Input VSWR vs Frequency

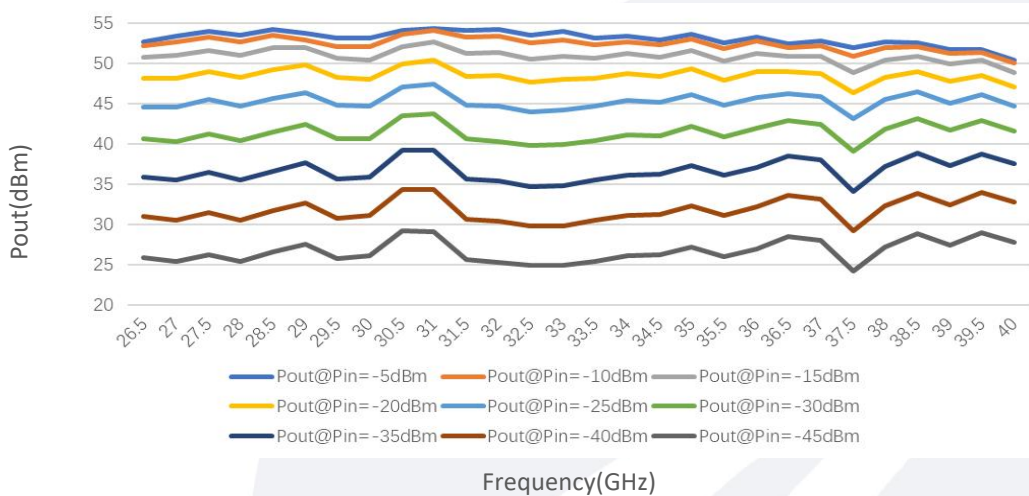


典型曲线 Typical Performance Data:

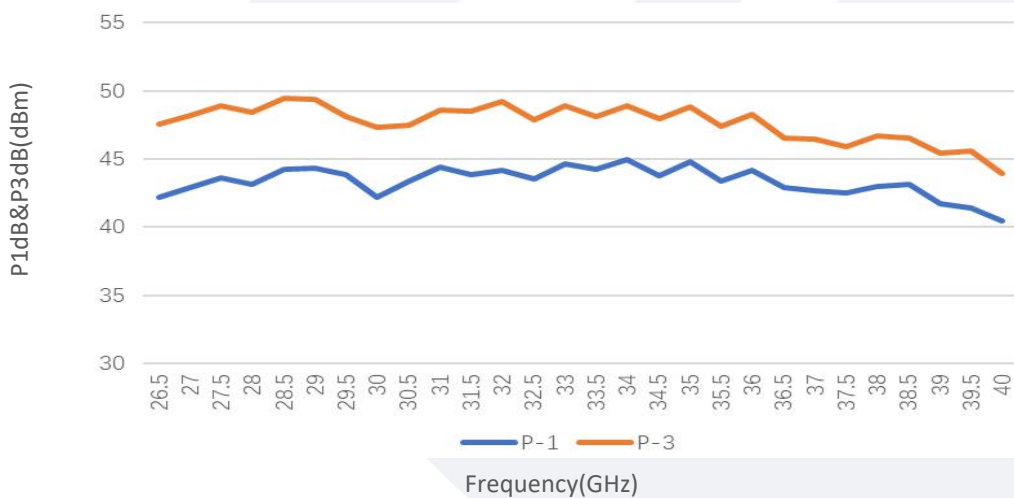
Gain vs Frequency



Pout@Equal_Pin



P1dB&P3dB vs Frequency



典型曲线 Typical Performance Data:

Spurious vs Frequency

