

## Standard Gain Horn Antenna

### WR-2.2/330-500GHz/25dBi Typ, Gain

Model:TL-2.2-SHA25

TL-2.2-SHA25 is a standard gain horn antenna that operates from 330 GHz to 500GHz. The antenna offers 25 dBi nominal gain. The input of this antenna is a WR-2.2 waveguide with UG-387/U-M anti-cocking flange. The standard gain horn is offered for antenna range calibration purpose mainly, but it can be also used for general purpose system set ups.

#### Features:

- Operating Frequency 330 to 500 GHz
- Linear Polarization
- Good Impedance Match

#### Applications:

- Antenna Ranges
- Antenna Gain Measurements
- System Setups

### 电气特性 Electrical Characteristics:

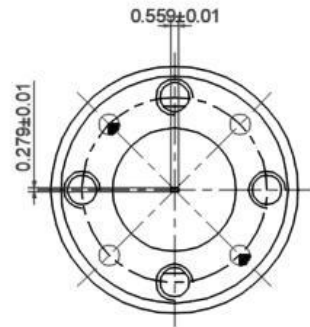
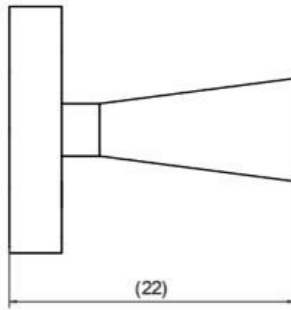
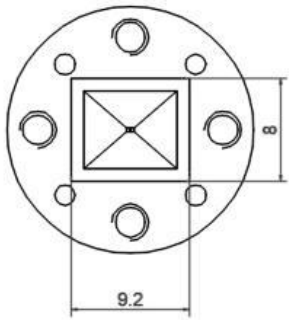
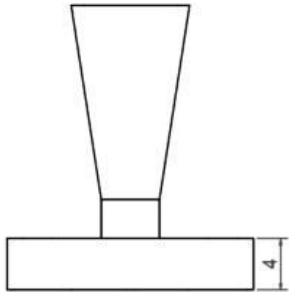
参数 Parameter	Min	Typ	Max	单位 Units
频率范围 Frequency Range	330		500	GHz
增益 Gain		25		dBi
极化方式 Polarization mode	Linear			
驻波 Input VSWR			1.15	:1
输出形式 Output mode	APF2.2			
3dB波束宽度 Antenna Beamwidth		10		°

### 环境和机械特性 Environmental And Physical Characteristics:

类型 Description	参数 Parameter	单位 Units
材质 Material	Brass	
表面处理 Finish	Gold plated	
接口 Connectors	WR-2.2/UG-387/U	
尺寸 Size	∅19.1*22	mm
重量 Weight	10	g

外形图 Outline Drawing:

Unit:mm



ESD Protection: Strictly adhere to ESD precautions to prevent electrostatic damage.

订货信息 Ordering Information:

标准型号 Base Number	描述 Description	版本号 Revision
TL-2.2-SHA25	Standard Gain Horn Antenna, 330-500GHz, Gain: 25dBi Typ.	Rev.1.0