

Part No.:RS8W60180-S

Power divider/Combiner 8Way SMA50Ω 6 to 18GHz

电气特性 Electrical:

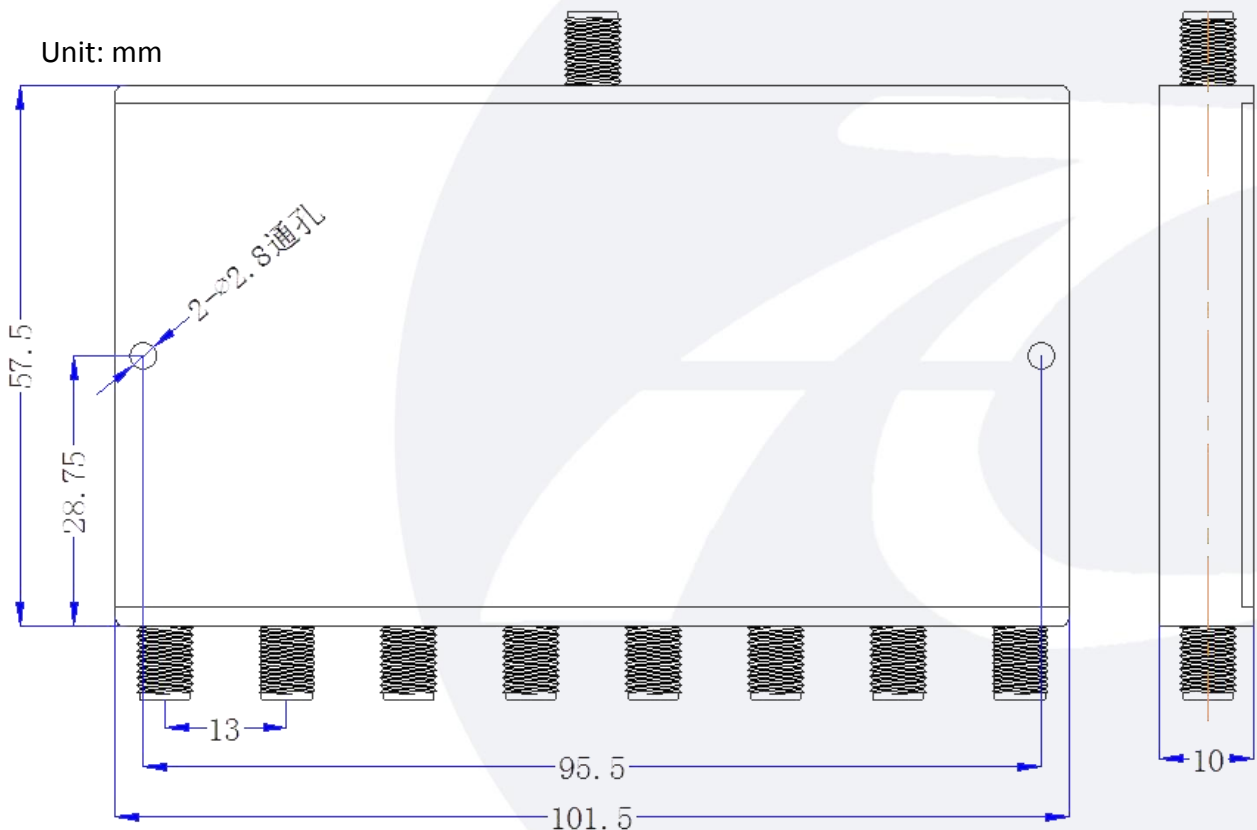
工作频率 Frequency Range: 6-18GHz
 插入损耗 Insertion Loss: $\leq 2.5\text{dB}$
 输入驻波比 VSWR: $\leq 1.80: 1$
 隔离 Isolation: $\geq 15\text{dB}$
 幅度平衡 Amplitude Balance: 1.0dB
 相位平衡 Phase Balance: $\leq \pm 10^\circ$
 耐功率 Power Handling: 30 Watt
 阻抗 Impedance: 50 OHMS



机械特性 Mechanical:

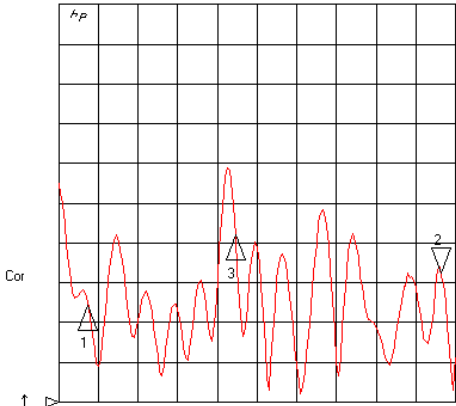
温度范围 Temperature Range: $-55^\circ\text{C} - +85^\circ\text{C}$
 接口 Connectors: SMA-Female
 相对湿度 Relative Humidity: 0 ~ 90%

外形尺寸 Outline Drawing:



尺寸公差: $\pm 0.5\text{mm}$

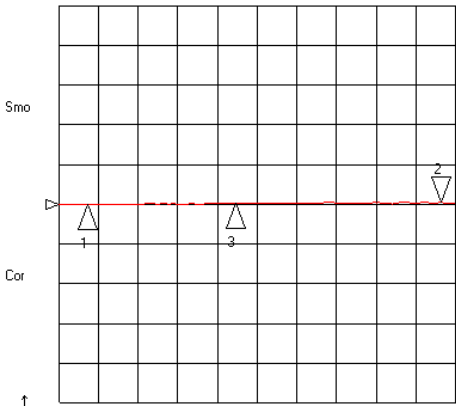
CH1 SWR 100 m / REF 1
S11 2 : 1. 3248 18 . 000 000 000 GHz



CH1 Markers
1 : 1. 2454
6. 00000 GHz
3 : 1. 4208
11 . 0064 GHz

START 5000 . 000 MHz STOP18500 . 000 MHz

CH3 PHA 10 ° / REF 0 °
S12/M 2 : 490 . 62 m ° 18 . 000 000 000 GHz

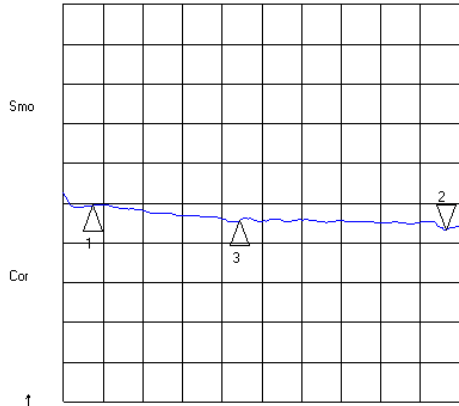


CH3 Markers
1 : 100 . 91 m °
6. 00000 GHz
3 : 302 . 25 m °
11 . 0064 GHz

START 5000 . 000 MHz STOP18500 . 000 MHz
2002-1-1 00:16:37

11 Mar 2020 06:20:55

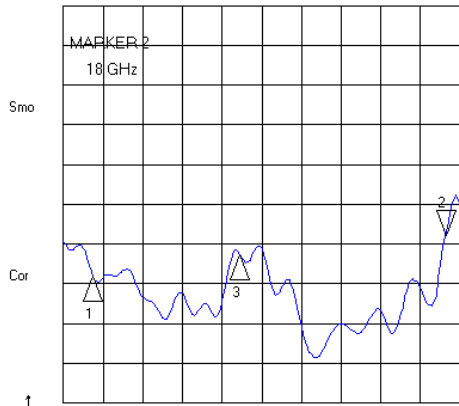
CH2 LOG 2.5 dB / REF -9 dB
S21 2 : -10 . 665 dB 18 . 000 000 000 GHz



CH2 Markers
1 : -9 . 1270 dB
6. 00000 GHz
3 : -10 . 069 dB
11 . 0064 GHz

START 5000 . 000 MHz STOP18500 . 000 MHz

CH4 SWR 100 m / REF 1
S22 2 : 1. 4217 18 . 000 000 000 GHz



CH4 Markers
1 : 1. 3200
6. 00000 GHz
3 : 1. 3759
11 . 0064 GHz

START 5000 . 000 MHz STOP18500 . 000 MHz