

Model:TLPA6G18G-53-53-BC
**Solid State High Power Amplifier Systems
 6-18GHz,Gain:53dB,Psat:53dBm,220V AC**
Feature:

- Wide Band: 6-18GHz
- Gain: 53dB Min
- Psat Output Power:53dBm Min
- Protection:Over TEM,over voltage, over current ,over VSWR protection.
- 50 Ohm Matched Input / Output

Electrical Specifications:

Parameter	Symbo	Min	Typ	Max	Units
Frequency range	BW	6-18			GHz
Power Gain	GP	53			dB
Gain flatness	Δ GL		\pm 3.5	\pm 5	dB
Output P1dB	P1dB	50	51		dBm
Output Psat	Psat	53	54		dBm
Spurious@Pout=53dBm	Spur			-50	dBc
Harmonics@Pout=53dBm	HAM			-15	dBc
Input VSWR	VSWRin			2.0	:1
AC Voltage	Vac	200	220	240	V AC
Power Consumption	Pdiss			3200	W
Impedance	I/O-IMP	50			Ohms

Mechanical Specifications:

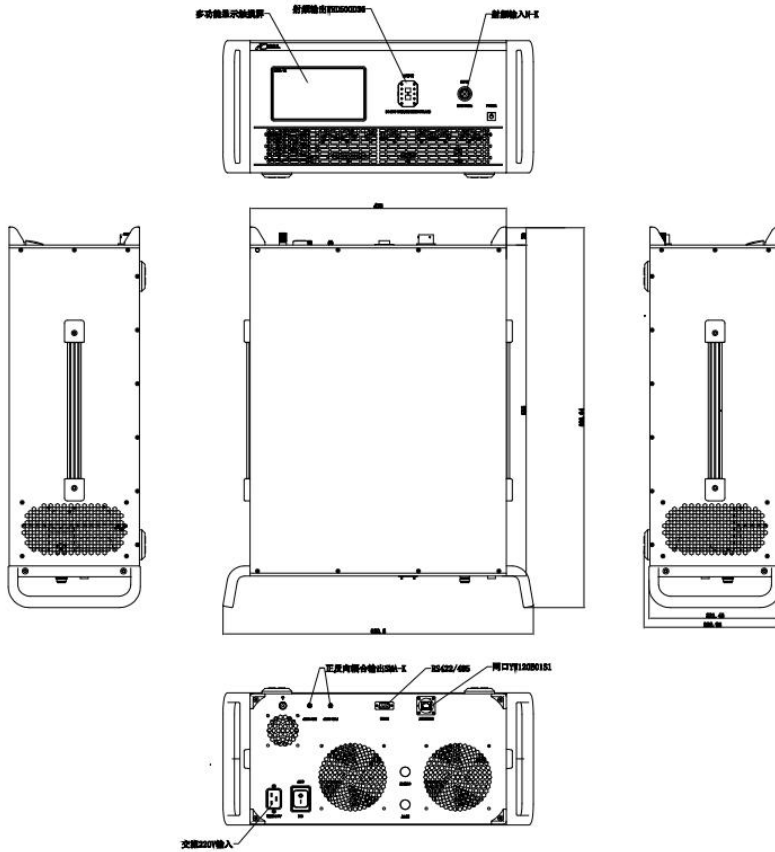
Parameter	Value	Units
Input/Output Connector	N Female/WRD500	
Forward/Reverse Coupling	SMA Female/ SMA female	
Communication Connector	DB9/RJ45	
Front Panel LCD Screen Display	7 inch LCD Screen Display	
Size	19 Inch 5U*550	
Weight	\leq 35	Kg

Absolute Maximum Ratings:

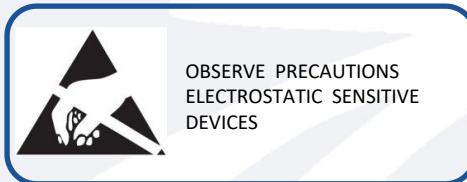
Parameter	Value
RF Input Power	10 dBm
ESD sensitivity (HBm)	Class 0, passed 150V

Outline Drawing:

Unit: mm



Key Features:



Parameter	Advantages
Control	RS422/Ethernet, LCD Screen Display
Protection functions	1, Over TEM 2, Over voltage 3, Over current protection 4, Over VSWR
Control functions	1, Power setting On/Off 2, Gain control.
Cooling system	Built in Cooling system, forced air cooling

Environmental Conditions:

Parameter	Min	Typ	Max	Units
Operating Temperature	-20		+40	°C
Non-operating Temperature	-30		+50	°C
Relative humidity		95		%
Altitude	10000			feet
Shock / Vibration(MIL-STD- 810F)	25g rms (15 degree 2KHz) endurance, 1 hour per axis			
Shock(non operating)	20G for 11msc half sin wave,3 axis both directions			

*Note: For a wider temperature range, please consult the manufacturer.

Ordering Information:

Part Number	Description	Revision
TLPA6G18G-53-53-BC	Solid State High Power Amplifier Systems 6-18GHz, Gain:53dB, Psat:53dBm, 220V AC, Built in Fan Cooling	Rev.1.0

Typical Performance Data:

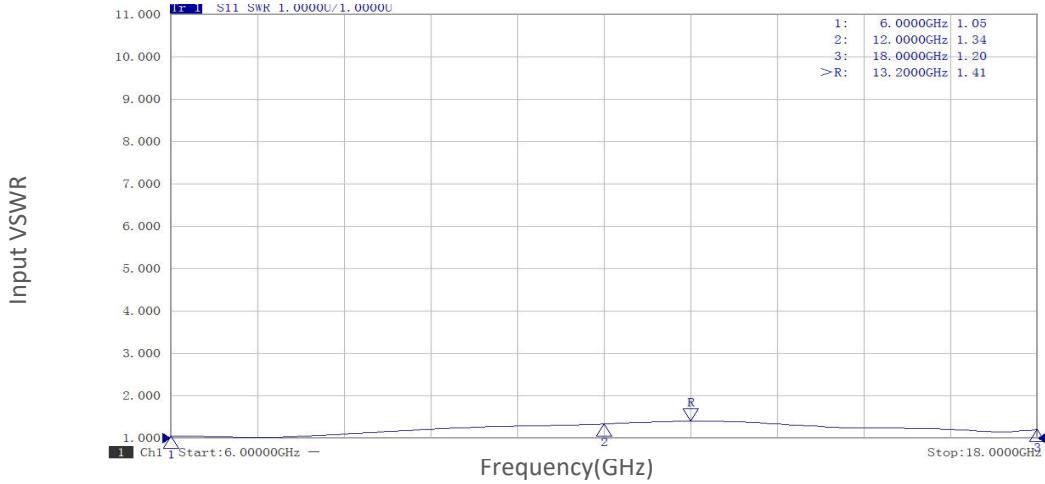
Small Signal Gain vs Frequency



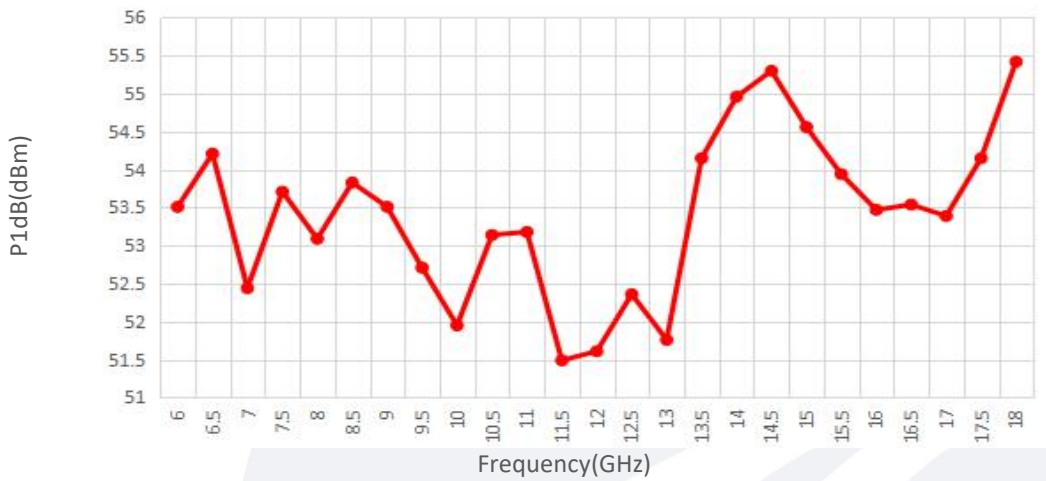
Note: Above data is for ref only, actual data may vary from unit to unit depending on operating environment and other factors like material lots etc.

Typical Performance Data:

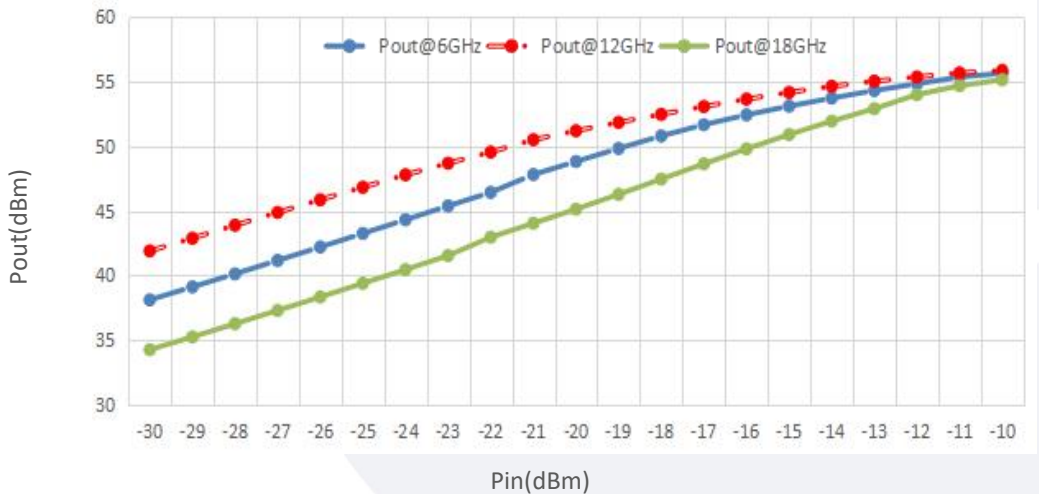
Input VSWR vs Frequency



P1dB vs Frequency



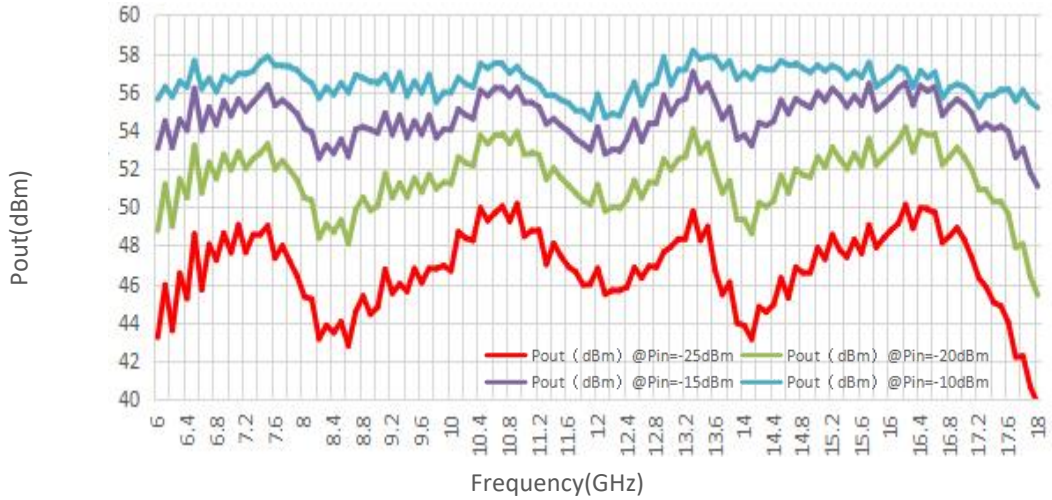
Pout@Pin



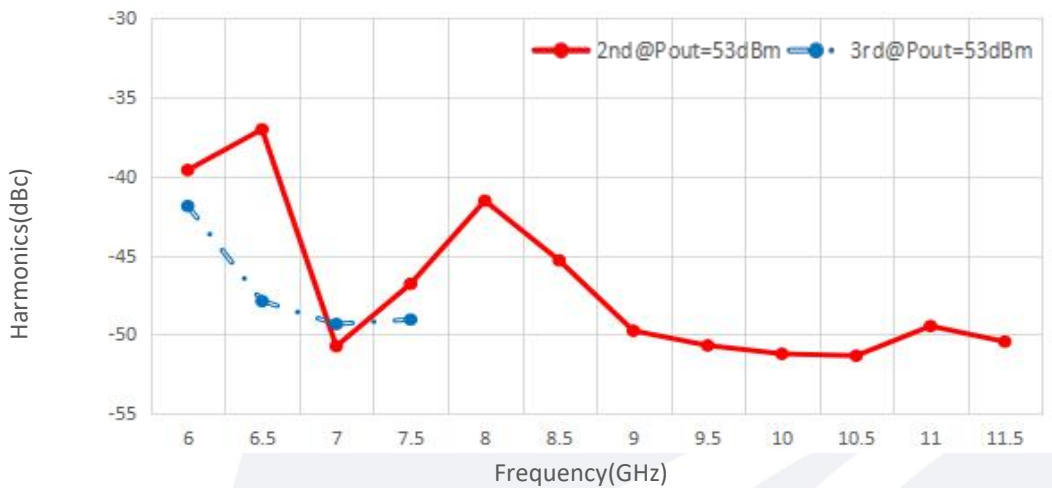
Note: Above data is for ref only, actual data may vary from unit to unit depending on operating environment and other factors like material lots etc.

Typical Performance Data:

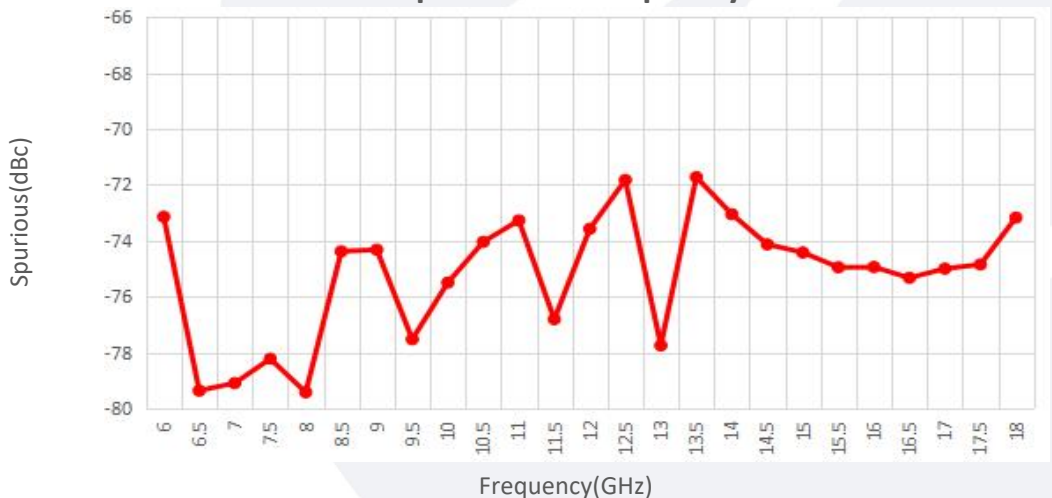
Pout@Equal_Pin



Harmonics vs Frequency



Spurious vs Frequency



Note: Above data is for ref only, actual data may vary from unit to unit depending on operating environment and other factors like material lots etc.