

**Model: TLSE-320350-1330-2.8**
**WR-2.8 Frequency Extender  
 X24 ,320-350 GHz, Output Power: 13 dBm**
**Feature:**

- Output Frequency: 320-350 GHz
- Output Power : 13 dBm Typ
- Low power consumption

**Electrical Specifications:**

Parameter	Min.	Typ.	Max.	Units
Output Frequency	320	340	350	GHz
Output Power		13		dBm
Dynamic Range (Optional mechanical Attenuator)		30		dB
Input Frequency	13.33		14.58	GHz
Input Power	+2		+6	dBm
Multiply Factor		24		dB
Harmonic Suppression		-20		dBc
DC Voltage		220		V

**Mechanical Specifications:**

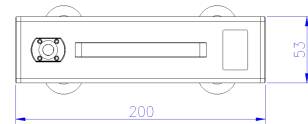
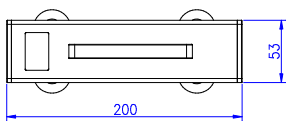
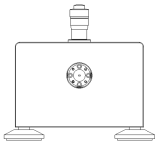
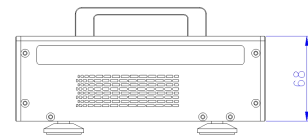
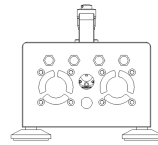
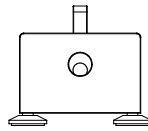
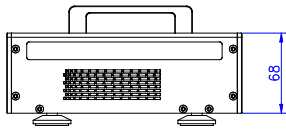
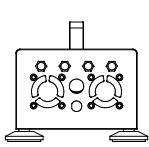
Parameter	Value	Units
Output Connector	WR-2.8/UG-387/U	
Input Connector	SMA Female	
Interface	Power adapter: 100-240VAC	
Size	200*68*53	mm

**Absolute Maximum Ratings:**

Parameter	Value
Supply Bias Voltage	+220 V
RF INPUT POWER	+6 dBm
ESD sensitivity (HBm)	Class 0, passed 150V

**Outline Drawing:**

Unit: mm



**Environmental Conditions:**

Parameter	Min.	Typ.	Max.	Units
Operating Temperature	-10		+65	°C
Non-operating Temperature	-55		+85	°C
Relative humidity		95		%
Altitude	50,000			feet
Shock / Vibration(MIL-STD-810F)	25g rms (15 degree 2KHz) endurance, 1 hour per axis			
Shock(non operating)	20G for 11msc half sin wave,3 axis both directions			

**Ordering Information:**

Part Number	Description	Option		Revision
		Optional Mechanical Attenuator	Isolation	
TLSE-320350-1330-2.8	Frequency Extender X24 ,320-350GHz, Output Power: 13 dBm	-A	-I	Rev.1.2

Typical Performance Data:

Pout vs Frequency

