

Model:TLPA6G18G-47-47-BC
**Solid State High Power Amplifier Systems
 6-18GHz,Gain:47dB,Psat:47dBm,110V AC**
Feature:

- Wide Band: 6-18GHz
- Gain: 47dB Min
- Psat Output Power:47dBm Min
- Protection:Over TEM,over voltage, over current ,over VSWR protection.
- 50 Ohm Matched Input / Output


Electrical Specifications:

Parameter	Symbo	Min	Typ	Max	Units
Frequency range	BW	6-18			GHz
Gain	GP	47			dB
Gain flatness	Δ GL			± 4.5	dB
Output P1dB	P1dB		42		dBm
Output Psat	Psat	47			dBm
Spurious@Pout=47dBm	Spur			-60	dBc
Harmonics@Pout=47dBm	HAM			-10	dBc
Input VSWR	VSWRin			2.0	:1
AC Voltage	Vac	110			V AC
Power Consumption	Pdiss	800@Max			Watts
Impedance	I/O-IMP	50			Ohms

Mechanical Specifications:

Parameter	Value	Units
Input/Output Connector	N Female/SMA Female	
Size	19 Inch 4U*550 depth	mm
Weight	≤ 20	Kg

Absolute Maximum Ratings:

Parameter	Value
RF Input Power	10 dBm
ESD sensitivity (HBm)	Class 0, passed 150V

Outline Drawing:

Unit: mm



Key Features:



OBSERVE PRECAUTIONS
ELECTROSTATIC SENSITIVE
DEVICES

Parameter	Advantages
Control	RS422/Ethernet, LCD Screen Display
Protection functions	1, Over TEM 2, Over voltage 3, Over current protection 4, Over VSWR
Control functions	1, Power setting On/Off 2, ALC
Cooling system	Built in Cooling system, forced air cooling

Environmental Conditions:

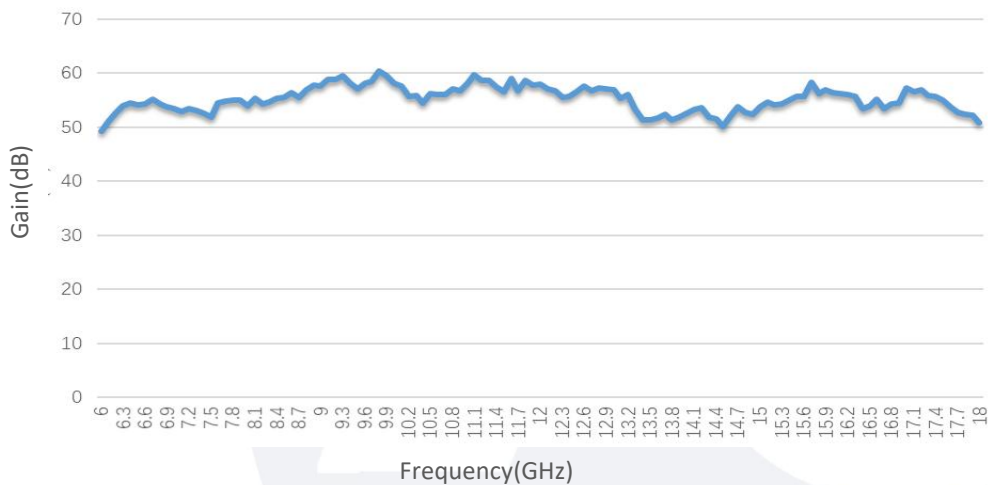
Parameter	Min	Typ	Max	Units
Operating Temperature	-20		+50	°C
Non-operating Temperature	-45		+65	°C
Relative humidity		95		%
Altitude	50000			feet
Shock / Vibration(MIL-STD- 810F)	25g rms (15 degree 2KHz) endurance, 1 hour per axis			
Shock(non operating)	20G for 11msc half sin wave,3 axis both directions			

Ordering Information:

标准型号 Part Number	描述 Description	版本号 Revision
TLPA6G18G-47-47-BC	Solid State High Power Amplifier Systems 6-18GHz,Gain:47dB,Psat:47dBm,110V AC,Built in Fan Cooling	Rev.1.0

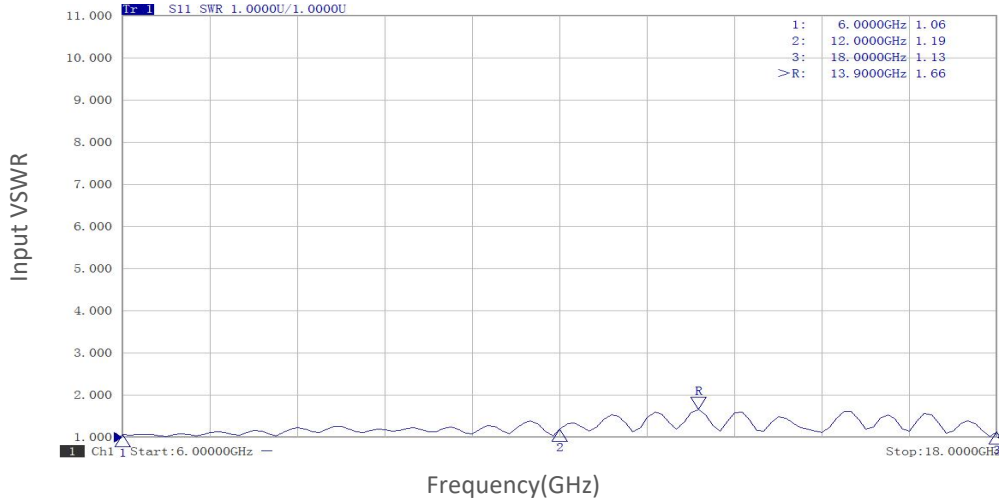
Typical Performance Data:

Gain vs Frequency

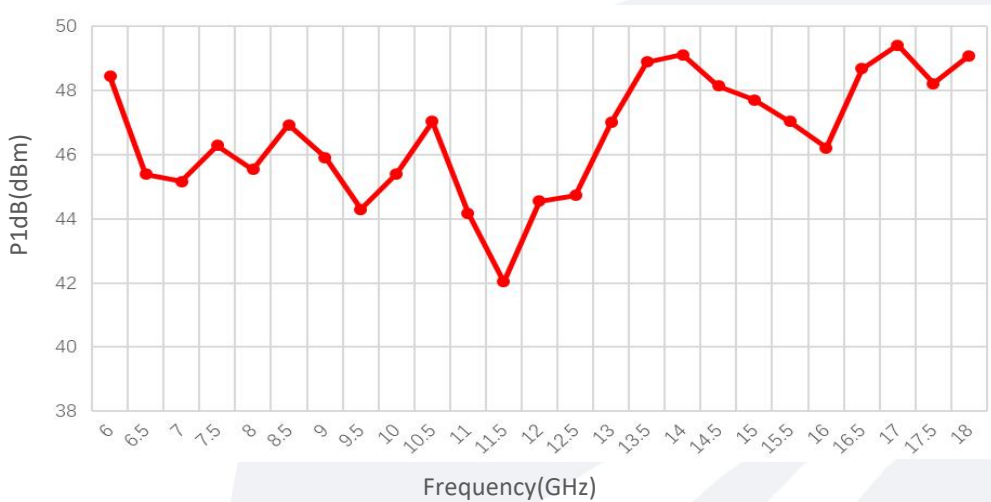


Typical Performance Data:

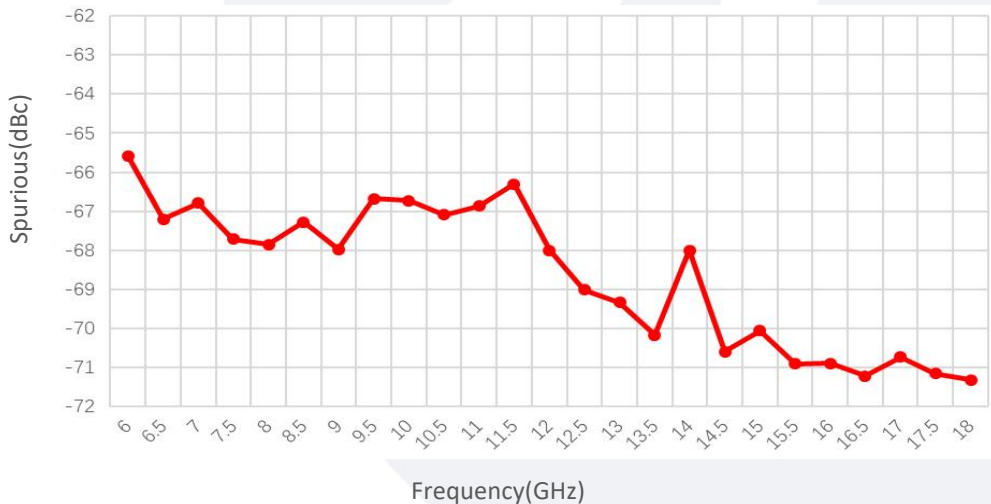
Input VSWR vs Frequency



P1dB vs Frequency

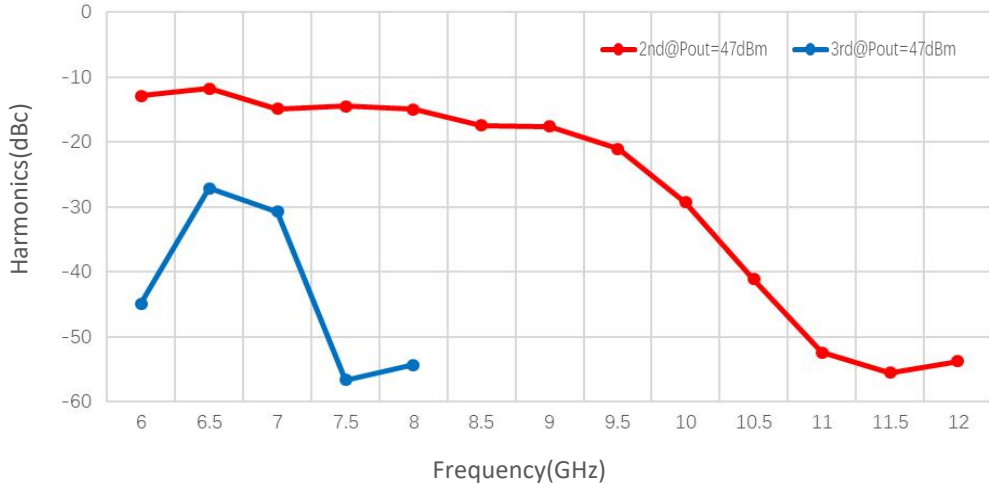


Spurious@Pout=47dBm

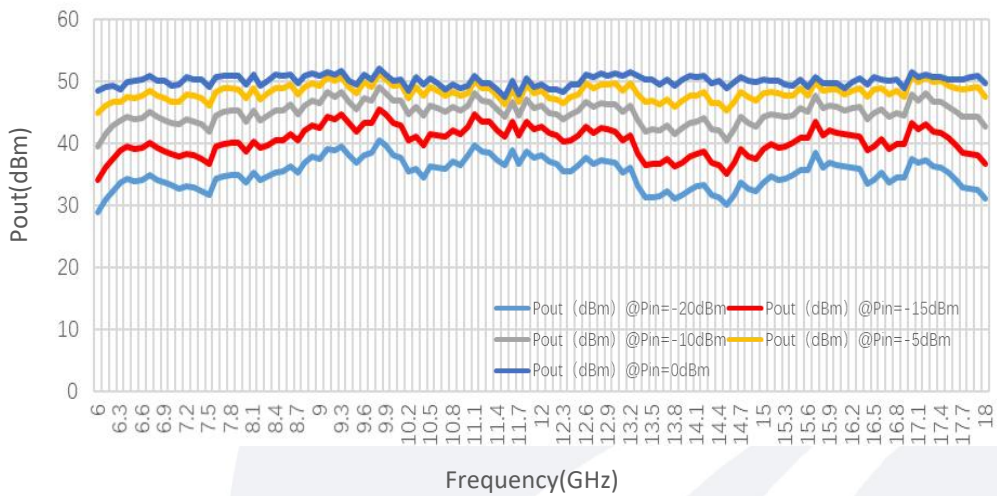


Typical Performance Data:

Harmonics@Pout=47dBm



Pout@Equal_Pin



Pout@Pin

