

Model: TLHM-220330-0240-03
Sub-Harmonic Mixer
RF:220-330 GHz,LO:110-165GHz,IF:DC-40 GHz
Feature:

- Low LO Power Requirement
- Subharmonic Mixing
- Compact Package

电气特性 Electrical:

参数Parameter	Min.	Typ.	Max.	单位Units
RF频率 RF Frequency	220		330	GHz
LO频率 LO Frequency	110		165	GHz
IF频率 IF Frequency	DC		40	GHz
LO 驱动功率 LO-Input power		10		dBm
射频输入功率 RF Input Power		-15	0	dBm
2XLO至RF隔离 2XLO to RF Isolation		-20		dBc
单边带变频损耗 SSB Conversion Loss	-15	-12	-10	dB

机械特性 Mechanical :

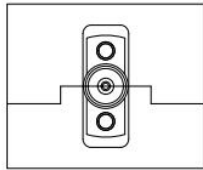
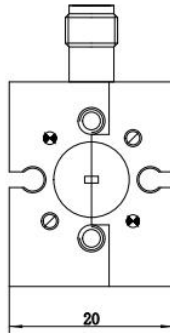
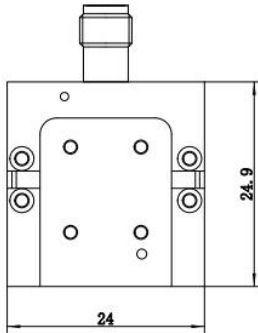
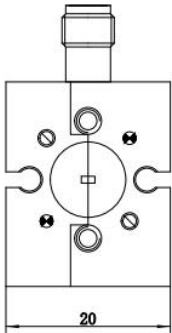
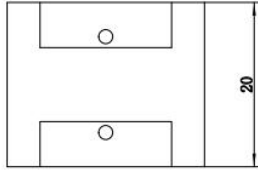
参数Parameter	指标 Value	单位Units
RF 接口RF Connector	WR-03/UG-387	
LO 接口LO Connector	WR-6.5/UG-387	
IF 接口 IF Connector	2.92mm Female	
尺寸 Size	24*24.9*20	mm

绝对最大值 Absolute Maximum Ratings:

参数Parameter	指标 Value
RF 功率 RF Input Power	0 dBm
IF 功率 IF Input Power	0 dBm
LO 功率 LO Input Power	+15 dBm
ESD灵敏度 ESD sensitivity (HBm)	Class 0, passed 150V

外形尺寸 Outline Drawing:

Unit: mm



OBSERVE PRECAUTIONS
ELECTROSTATIC SENSITIVE
DEVICES

温度环境 Environmental Conditions:

参数Parameter	Min.	Typ.	Max.	单位Units
操作温度 Operating Temperature	0		+50	°C
存储温度 Non-operating Temperature	-45		+85	°C
相对湿度 Relative humidity		95		%
海拔 Altitude	50,000			feet
震动 Shock / Vibration(MIL-STD-810F)	25g rms (15 degree 2KHz) endurance, 1 hour per axis			
冲击 Shock(non operating)	20G for 11msc half sin wave,3 axis both directions			

订货信息 Ordering Information:

标准型号 Part Number	描述 Description	版本号Revision
TLHM-220330-0240-03	Subharmonically Mixer RF:220-330GHz,LO:110-165GHz,IF:DC-40GHz	Rev.1.1

典型曲线 Typical Performance Data:

Conversion Loss vs RF Frequency

